

TREKKING 2016

# BLACK MOUNTAIN KUMIVA DRY LAKE





BLACK MOUNTAIN & KAMIVA DRY LAKE are within the Kamiva Valley in the Black Rock Desert Area. Located on the far southwest side of Jungo Rd it is an area not much visited unless you have a specific reason to go there. In the surrounding area you'll find several Hot Springs, Lava Beds and Old Mines & Ghost Towns. They are spread out over a large area and not so easily found. The mountain can be climbed, but it's big, and the lake bed is pristine.



Empire & Gerlach

447



Starting Point

447

1 • 9.5 miles  
from the Empire Store  
36° 51' 35.78" N  
119° 21' 59.86" W

2 • 1.8 miles  
1st Ranch Road  
40° 25' 51.55" N  
119° 18' 02.48" W

The shortest route to Black Mountain  
& Kamiva Dry Lake is off Rt 447



www.brxs.org





**Ranch**  
40° 26' 03.38" N  
119° 17' 29.87" W

**3 • 2.5 miles**  
**2nd Ranch Road**  
40° 25' 04.33" N  
119° 17' 22.46" W

**4 • 3.1 miles**  
40° 25' 23.91" N  
119° 16' 40.88" W





**5 • 5.9 miles**

40° 27' 01.38" N

119° 15' 04.13" W

Dotted line is route to a Hot Spring

**6 • 8 miles**

40° 26' 03.73" N

119° 13' 36.87" W

**7 • 8.4 miles**

40° 25' 50.24" N

119° 13' 14.66" W



Rock Spring

Deer Canyon



Deer Canyon

Lookout  
Spring

**8 • 8.95 miles**

40° 25' 24.62" N  
119° 13' 07.98" W

**1 • 9.5 miles**

38° 51' 35.73" N  
119° 13' 59.88" W

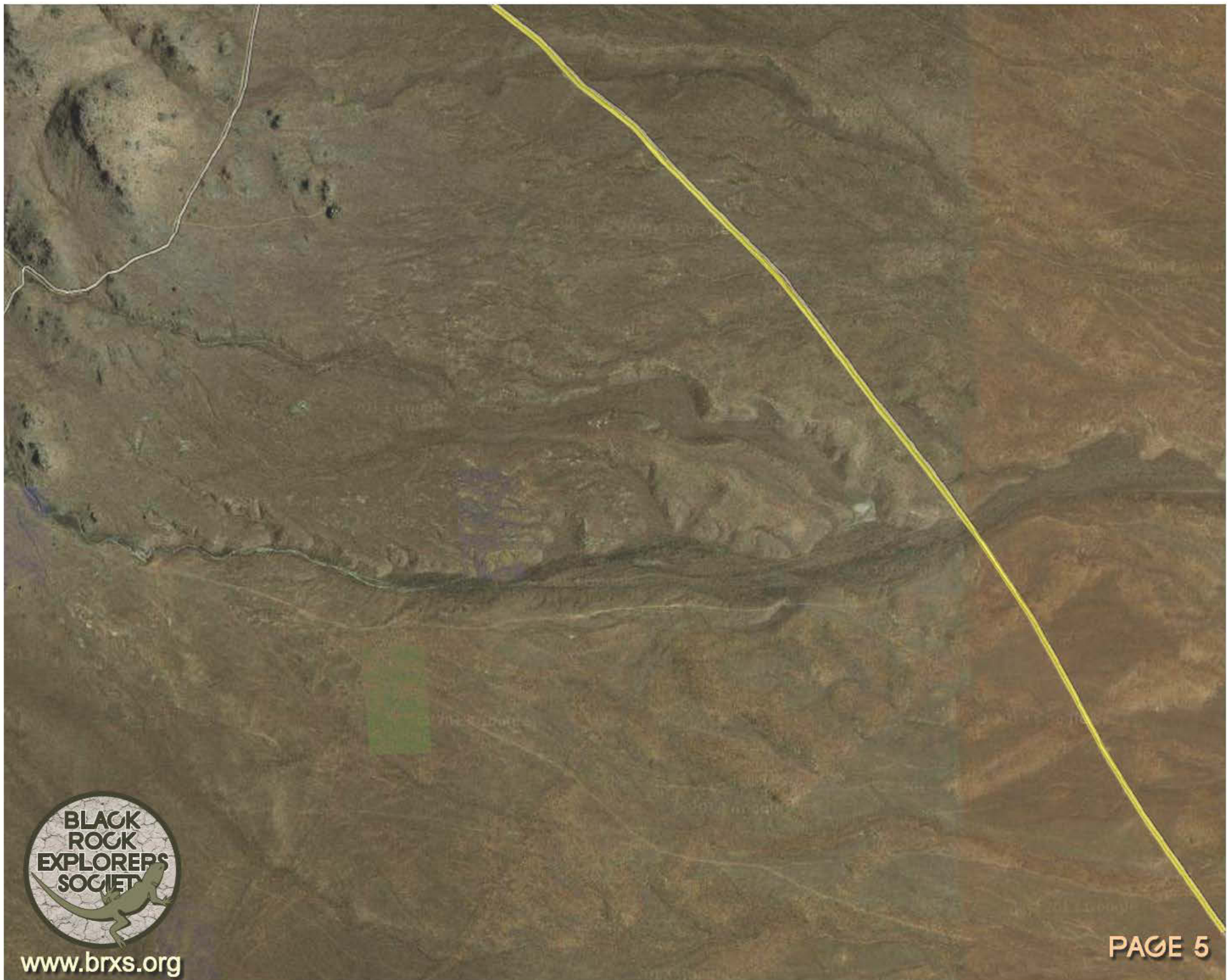
**9 • 9.41 miles**

40° 25' 01.91" N  
119° 12' 58.15" W



[www.brxs.org](http://www.brxs.org)





[www.brxs.org](http://www.brxs.org)







**10 • 14.75 miles**  
40° 21' 24.74" N  
119° 09' 18.26" W



[www.brxs.org](http://www.brxs.org)

**11 • 16.3 miles**  
40° 20' 44.32" N  
119° 07' 39.96" W

**PAGE 7**



Dotted line is route to Lava Beds,  
Skull Rock and Jungo Road

**12 • 18.5 miles**  
40° 22' 32.31" N  
119° 07' 32.38" W



**10 • 14.75 miles**  
40° 21' 24.74" N  
119° 09' 18.26" W



Dotted line is route to Lava Beds,  
Skull Rock and Jungo Road

● SPRINGER MINE

● COLRADO PLACER  
MINE

KAMINA LAKE

BLACK MTN





40° 26' 15.54" N  
119° 13' 10.60" W  
7 • 8.5 miles

Interesting Hot Spring

6 • 8 miles  
40° 26' 03.73" N  
119° 13' 36.87" W

8 • 3 miles  
from Point 5  
40° 25' 54.44" N  
119° 10' 25.83" W



Dotted line is route to Black Mtn &  
Kamma Dry Lake

BLACK  
ROCK  
EXPLORERS  
SOCIETY

[www.brxs.org](http://www.brxs.org)