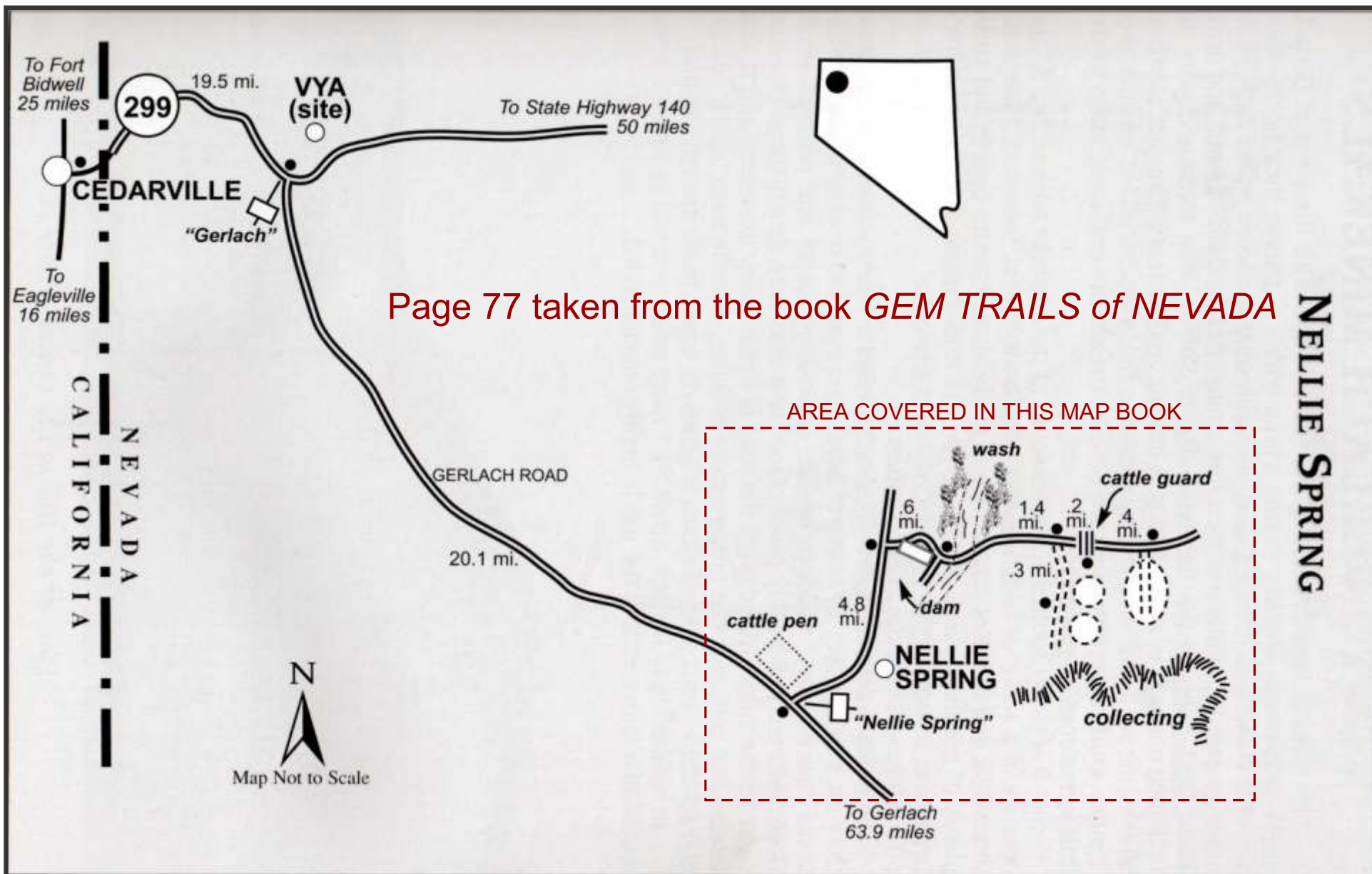


TREKKING 2018

GEM TRAILS





Page 77 taken from the book *GEM TRAILS of NEVADA*

NELLIE SPRING

This location boasts outstanding specimens of opalite, occurring in a wide range of colors, frequently filled with unusual and interesting inclusions. As is the case with most opalite, much of what can be found here is substantially fractured, but it doesn't take much effort to gather a quantity of good solid material in a short amount of time. From Vya head south on Rt34 toward Gerlach for about 20 miles of north from Gerlach for 62 miles. Turn east to Nellie Spring. Go east 5 miles, then right, around the small dam, 0.6 miles, and across the wash another 1.4 miles to where some ruts intersect on the right. Follow those ruts about 0.3 miles, and then on the left, you will see pits that are the opalite diggings. Another similar deposit is situated about 0.6 miles farther east, as

shown. The best collecting is in and around the excavations, but additional material can be scattered throughout much of the surrounding terrain. The opalite tends to display a good range of pleasing pastel colors, including cream, yellow, orange and brown. If you want to remove specimens directly from the deposit, be sure to wear goggles and gloves, since it splinters easily when struck with a hammer. While here, be sure to explore the hills to the south. There you can often find more opalite, occasional pieces of petrified wood, jasper, obsidian, and even arrowheads and ancient Indian chippings, all helping to make this a most productive and interesting location to visit.

The actual distance to the picking fields is not very long but because a lot of it is "off road" there are several route mile marks.

There are a few springs worth visiting along the way but attention should be paid to the route.

It is not a hard Trek but do not take the family car, an SUV is recommended.

VYA

34

Starting Point
62 miles
from BRUNO's
41° 21' 18.53" N
119° 36' 33.84" W

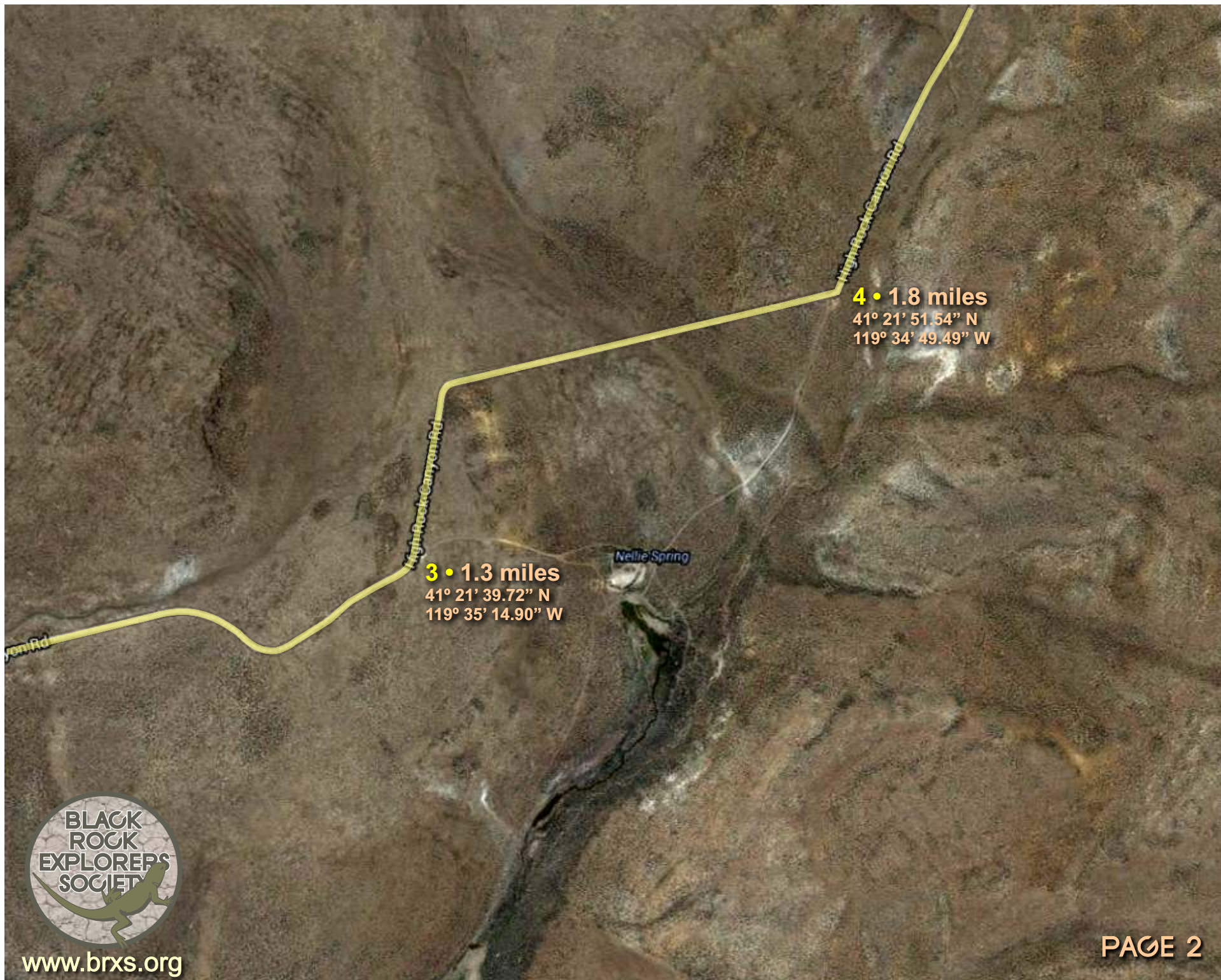
1 • .4 miles
41° 21' 29.24" N
119° 36' 20.69" W

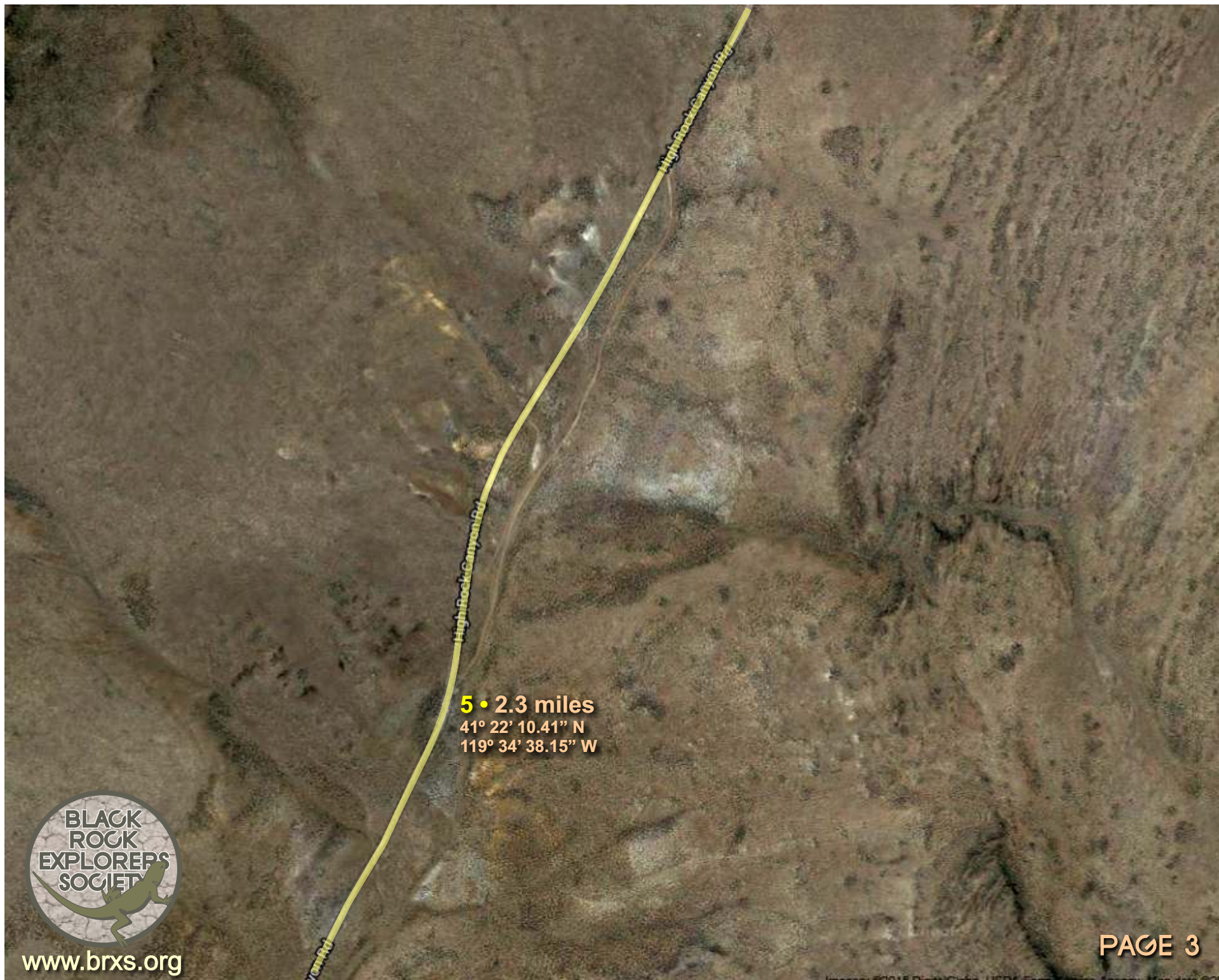
2 • .8 miles
41° 21' 21.98" N
119° 36' 14.27" W

High Rock Canyon Rd

High Rock Canyon







Indian Spring

6 • 3.8 miles
41° 23' 24.81" N
119° 34' 08.52" W



Heading north at Point 7 will take you to the North Gate of High Rock Canyon, thus the roads name

7 • 5 miles
41° 24' 22.91" N
119° 33' 42.54" W

Right after turning right the road becomes a really untraveled dirt trail. Pay attention and follow the maps

Dam

8 • 5.5 miles
41° 24' 01.45" N
119° 33' 24.78" W





Cattle Guard

10 • 6.9 miles

41° 23' 50.64" N
119° 32' 03.55" W

11 • 7.2 miles

41° 23' 50.64" N
119° 31' 47.79" W


12 • 7.5 miles

41° 23' 45.66" N
119° 31' 23.31" W

13 • 7.6 miles

41° 23' 40.35" N
119° 31' 19.19" W





There are roads and trails all over the area. No matter where you Trek keep track on the “main road” you came in on - if you can call it that.

