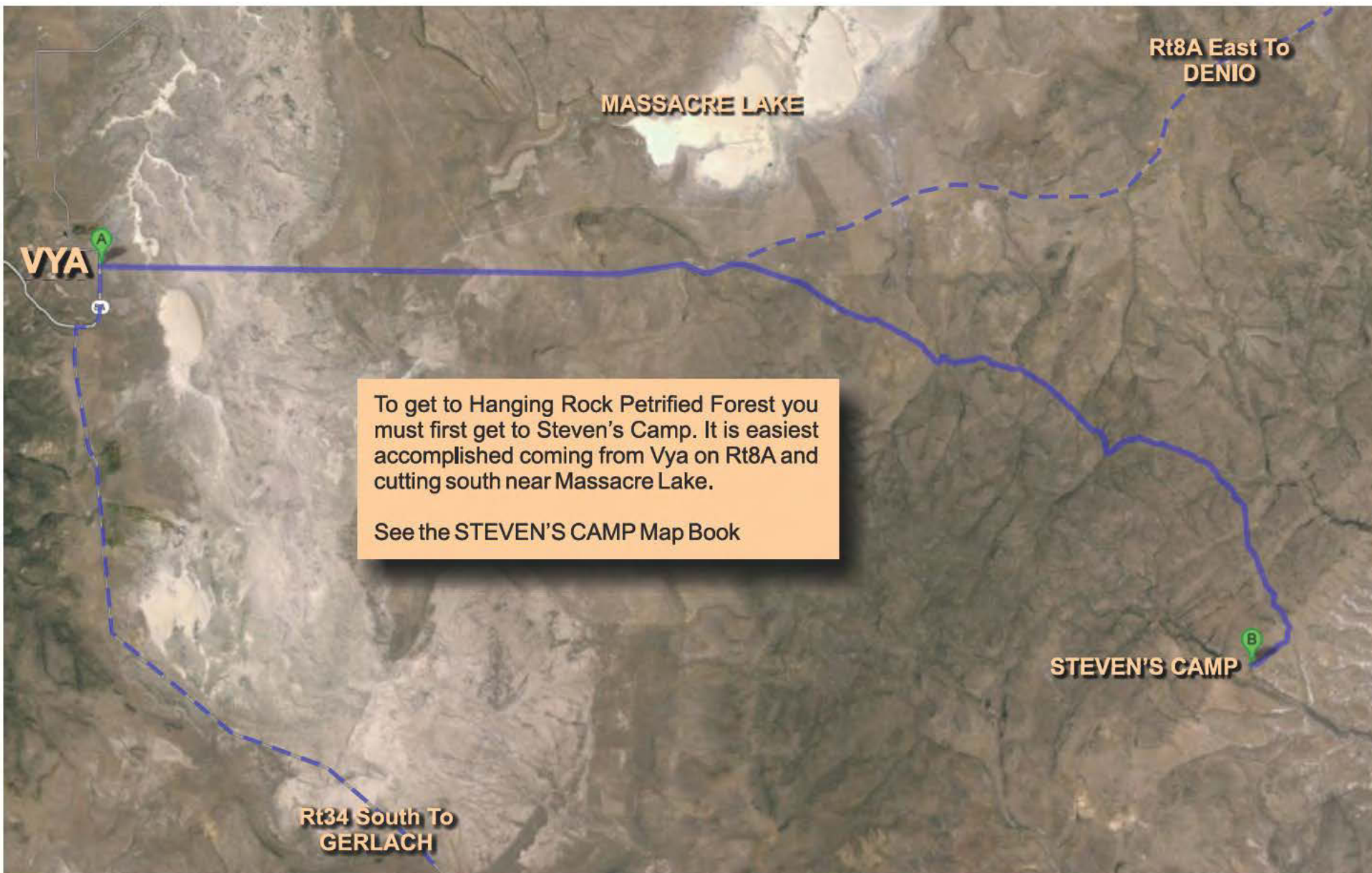


TREKKING BLACK ROCK

# HANGING ROCK CANYON





MASSACRE LAKE

Rt8A East To  
DENIO

VYA

To get to Hanging Rock Petrified Forest you must first get to Steven's Camp. It is easiest accomplished coming from Vya on Rt8A and cutting south near Massacre Lake.

See the STEVEN'S CAMP Map Book

STEVEN'S CAMP

Rt34 South To  
GERLACH



Dotted line heads to Rt8a and VYA

Dotted line heads to Rt8a and VYA

**Ending Point  
HANGING ROCK  
PETRIFIED FOREST**

**3.8 Miles**

41° 30' 07.11" N  
119° 26' 57.56" W

**Starting Point  
STEVEN'S CAMP**

41° 29' 24.92" N  
119° 29' 29.42" W

Hanging Rock Petrified Forest is easiestly found by starting out at Steven's Camp, back tracking to Vya and turning East at the second dirt road on the right.



[www.brxs.org](http://www.brxs.org)

Dotted lines head to High Rock Canyon



Starting Point to Hanging Rock is from Steven's Camp, which can be reached coming down from Vya on Rt8A or coming up through High Rock Canyon.

Take the down route from Vya

**Starting Point  
STEVEN'S CAMP**

41° 29' 24.92" N  
119° 29' 29.42" W

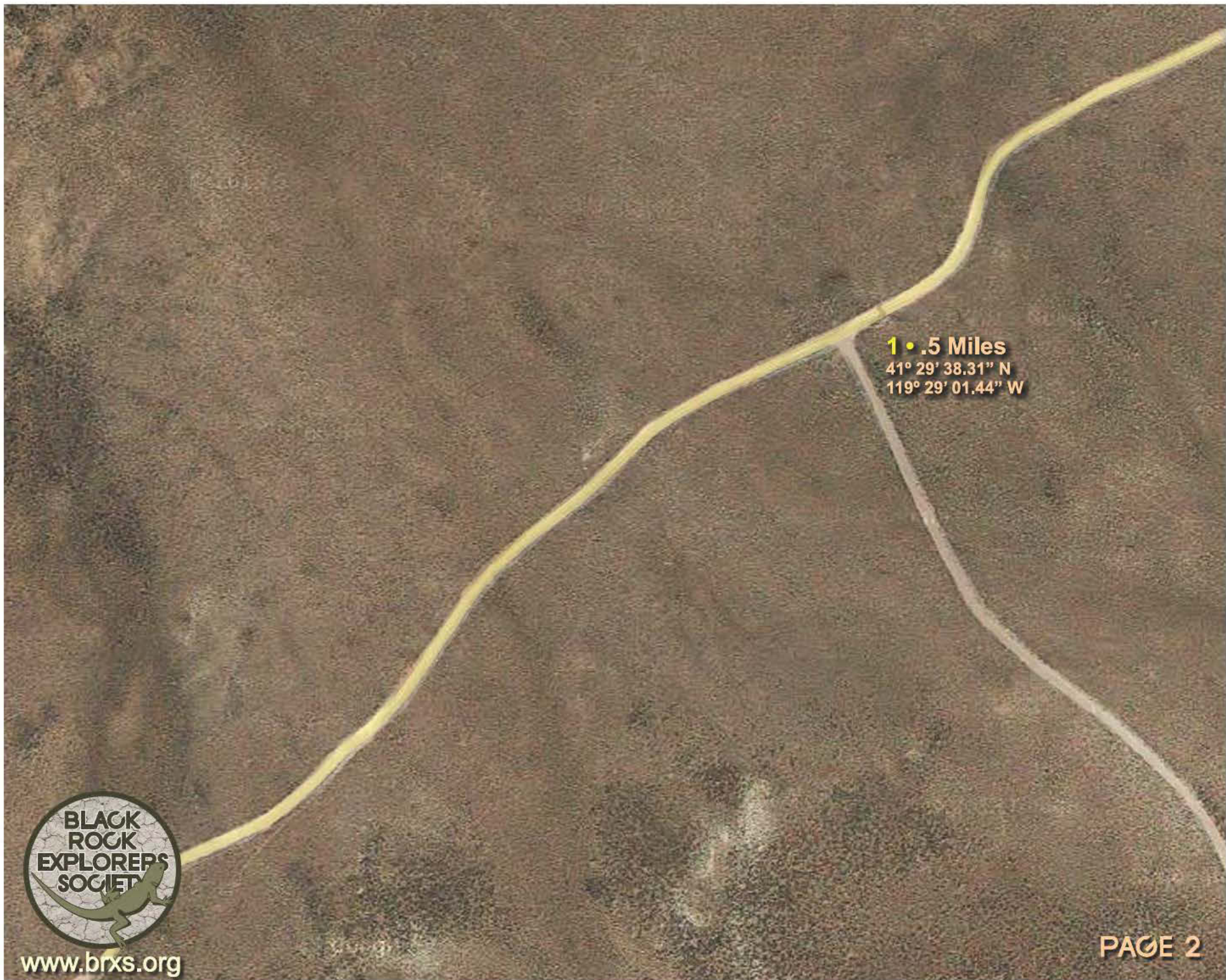


[www.brxs.org](http://www.brxs.org)

**To HIGH ROCK CANYON**

**PAGE 1**







2 • .9 Miles

41° 29' 53.22" N

119° 28' 45.52" W



[www.brxs.org](http://www.brxs.org)





[www.brxs.org](http://www.brxs.org)

**3 • 1.4 Miles**  
41° 29' 40.81" N  
119° 28' 13.83" W

**PAGE 4**





**3 • 1.4 Miles**  
41° 29' 40.81" N  
119° 28' 13.83" W



[www.brxs.org](http://www.brxs.org)







**4 • 2 Miles**

41° 29' 45.16" N

119° 27' 33.80" W



[www.brxs.org](http://www.brxs.org)





**5 • 2.5 Miles**  
41° 29' 33.92" N  
119° 26' 52.08" W



[www.brxs.org](http://www.brxs.org)



**HANGING ROCK  
PETRIFIED FOREST**

**6 • 3.4 Miles**  
41° 30' 03.92" N  
119° 26' 41.71" W



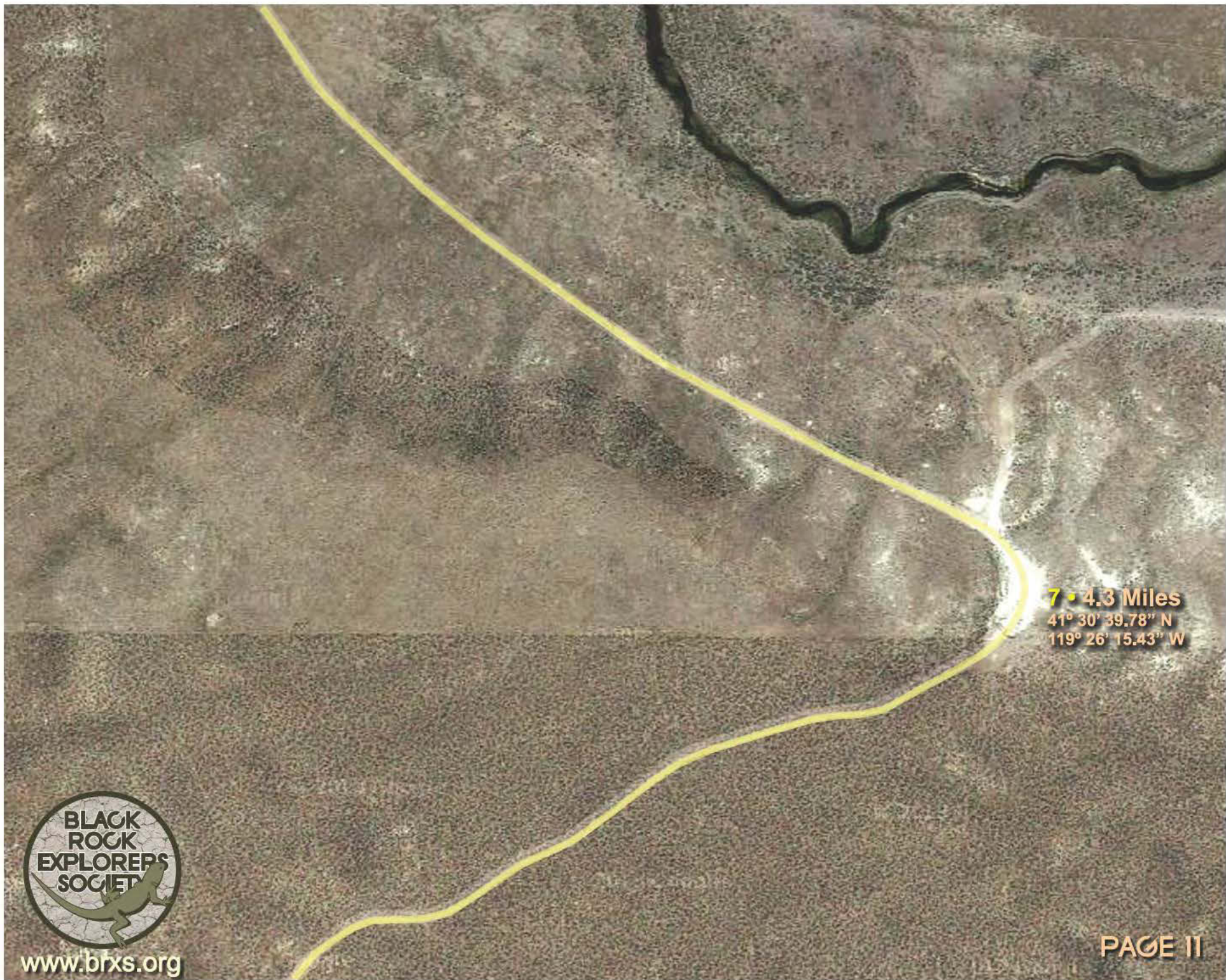
[www.brxs.org](http://www.brxs.org)





[www.brxs.org](http://www.brxs.org)



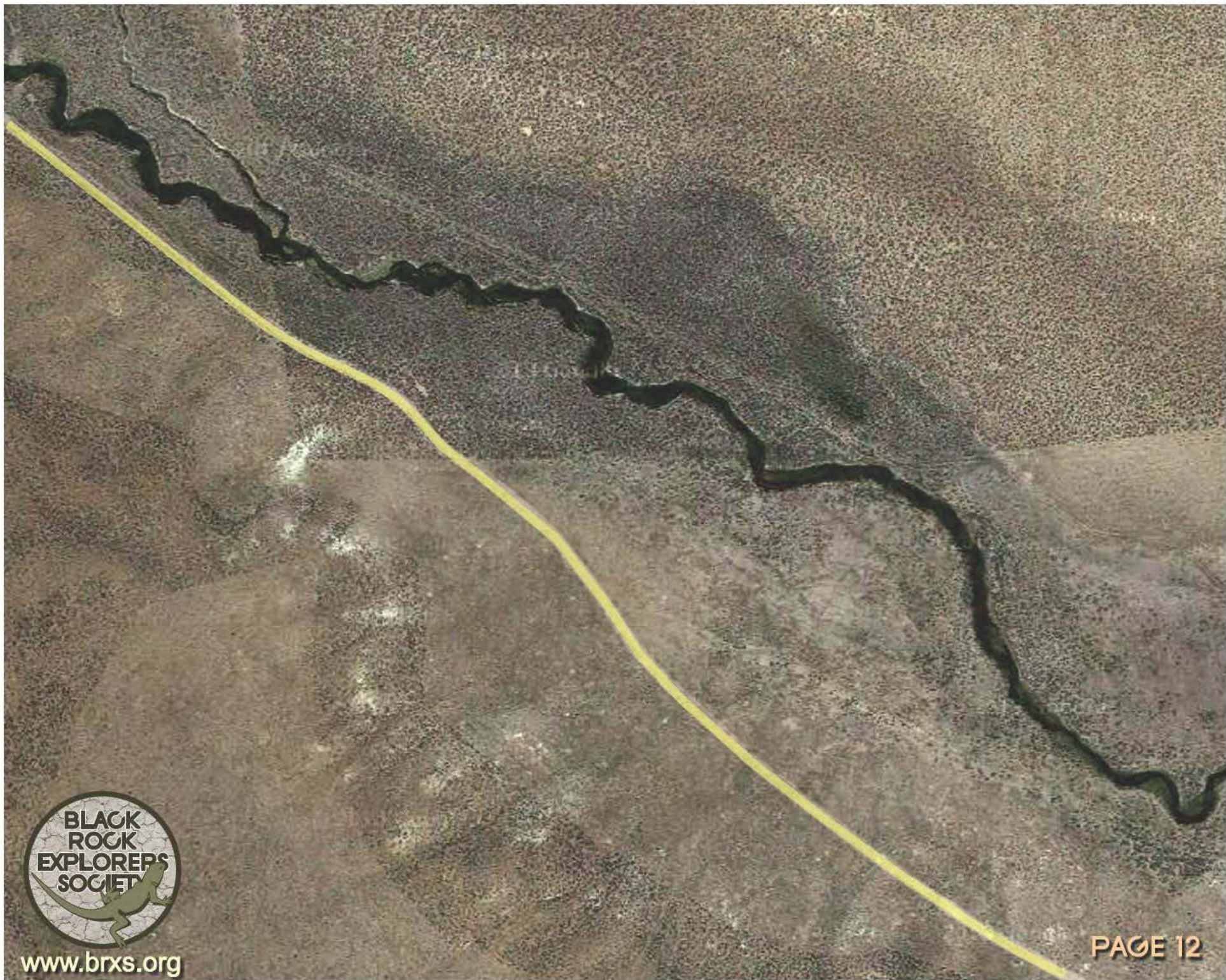


7 • 4.3 Miles  
41° 30' 39.78" N  
119° 26' 15.43" W



[www.bfxs.org](http://www.bfxs.org)





[www.brxs.org](http://www.brxs.org)





**8 • 5 Miles**  
41° 31' 01.08" N  
119° 26' 51.23" W



[www.brxs.org](http://www.brxs.org)



Dotted line heads to Rt8a and VYA

Hanging Rock is actually on private property. The owners are friendly and with permission will left you photograph the area.

See the next page.

HANGING ROCK

9 • 5.4 Miles  
41° 31' 17.09" N  
119° 27' 07.10" W







## HANGING ROCK



[www.brxs.org](http://www.brxs.org)