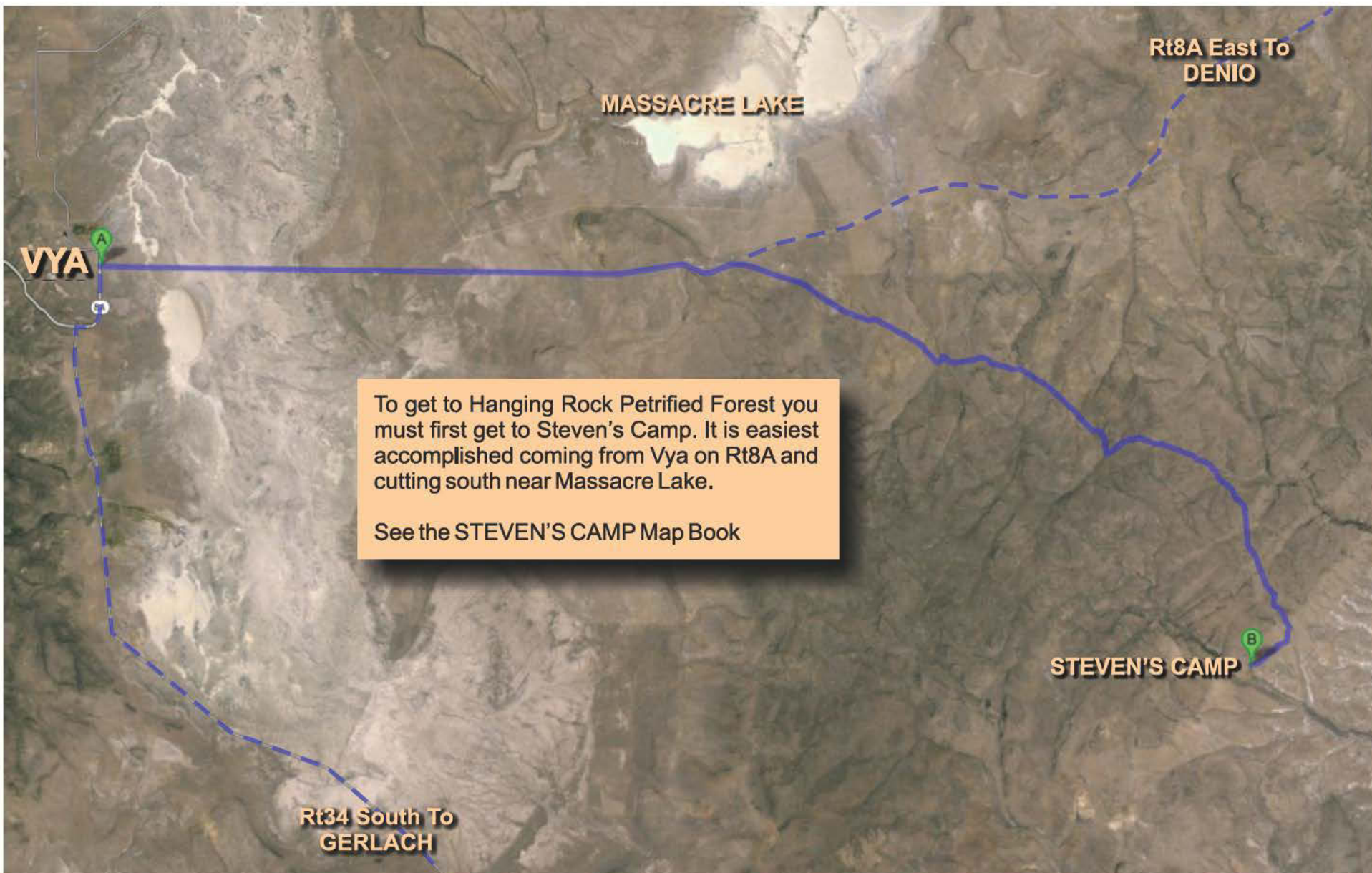


TREKKING BLACK ROCK

HANGING ROCK  
PETRIFIED FOREST





MASSACRE LAKE

Rt8A East To  
DENIO

VYA

To get to Hanging Rock Petrified Forest you must first get to Steven's Camp. It is easiest accomplished coming from Vya on Rt8A and cutting south near Massacre Lake.

See the STEVEN'S CAMP Map Book

STEVEN'S CAMP

Rt34 South To  
GERLACH



Dotted line heads to Rt8a and VYA

Dotted line heads to Rt8a and VYA

**Ending Point**  
**HANGING ROCK**  
**PETRIFIED FOREST**

**3.8 Miles**

41° 30' 07.11" N  
119° 26' 57.56" W

**Starting Point**  
**STEVEN'S CAMP**

41° 29' 24.92" N  
119° 29' 29.42" W

Hanging Rock Petrified Forest is  
easiestly found by starting out at  
Steven's Camp, back tracking to Vya  
and turning East at the second dirt  
road on the right.



[www.brxs.org](http://www.brxs.org)

Dotted lines head to High Rock Canyon



Starting Point to Hanging Rock is from Steven's Camp, which can be reached coming down from Vya on Rt8A or coming up through High Rock Canyon.

Take the down route from Vya

**Starting Point  
STEVEN'S CAMP**

41° 29' 24.92" N  
119° 29' 29.42" W

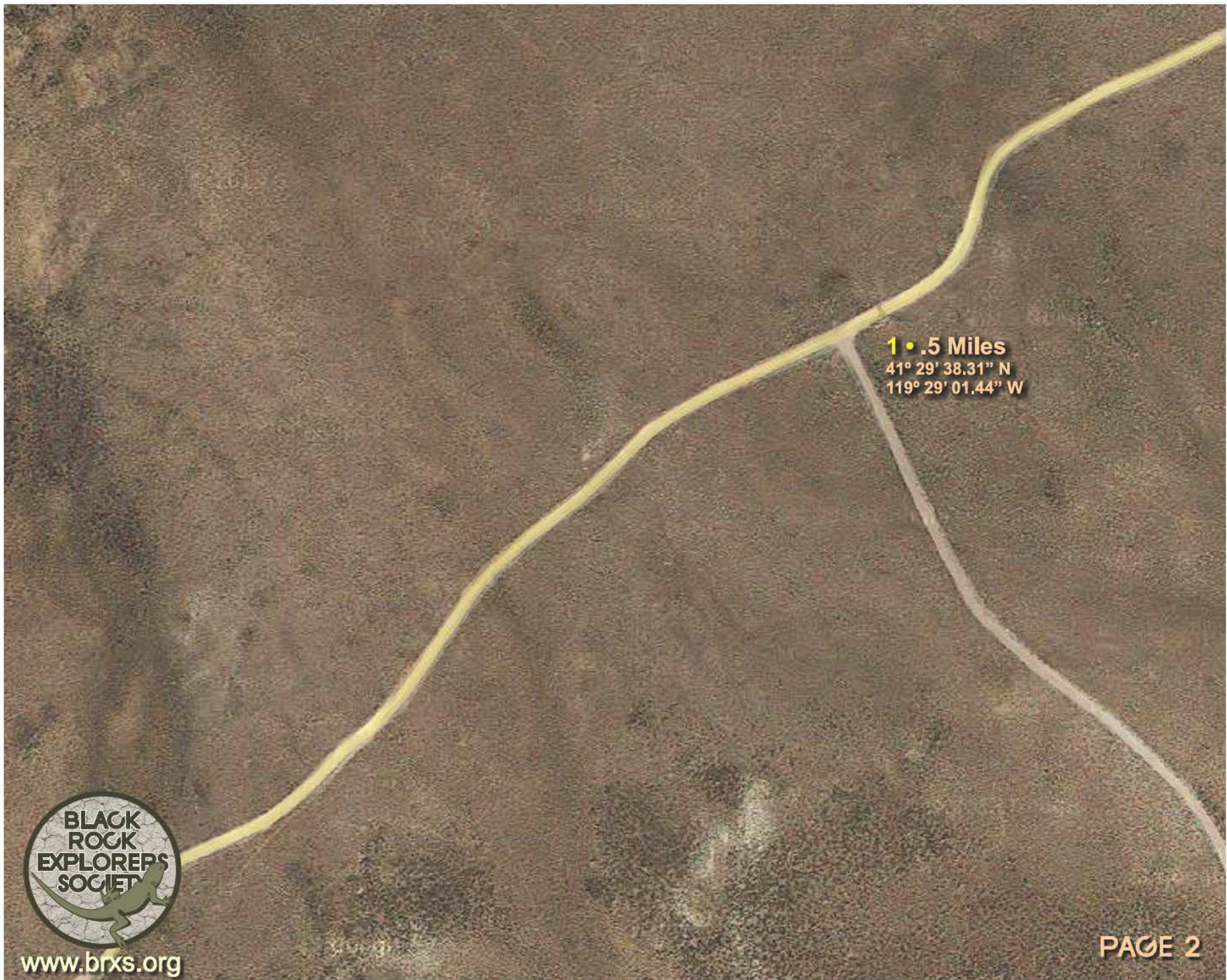


[www.brxs.org](http://www.brxs.org)

**To HIGH ROCK CANYON**

**PAGE 1**







**2 • .9 Miles**  
41° 29' 53.22" N  
119° 28' 45.52" W







[www.brxs.org](http://www.brxs.org)

**3 • 1.4 Miles**  
41° 29' 40.81" N  
119° 28' 13.83" W

**PAGE 4**





**3 • 1.4 Miles**  
41° 29' 40.81" N  
119° 28' 13.83" W



[www.brxs.org](http://www.brxs.org)





4 • 2 Miles  
41° 29' 45.16" N  
119° 27' 33.80" W



[www.brxs.org](http://www.brxs.org)



**4 • 2 Miles**

41° 29' 45.16" N

119° 27' 33.80" W



[www.brxs.org](http://www.brxs.org)









**5 • 2.5 Miles**  
41° 29' 33.92" N  
119° 26' 52.08" W



[www.brxs.org](http://www.brxs.org)



**6 • 3.4 Miles**  
41° 30' 03.92" N  
119° 26' 41.71" W



[www.brxs.org](http://www.brxs.org)



**HANGING ROCK  
PETRIFIED FOREST**

**7 • 3.8 Miles**  
41° 30' 07.11" N  
119° 26' 57.56" W

**6 • 3.4 Miles**  
41° 30' 03.92" N  
119° 26' 41.71" W





# HANGING ROCK PETRIFIED FOREST

7 • 3.8 Miles  
41° 30' 07.11" N  
119° 26' 57.56" W

Hanging Rock Petrified Forest, unlike Lund Petrified Forest on Rt34, is isolated. But like Lund it is protected by the BLM, whose majority of agents, it seems, do not know where it is let alone that it exists at all.

It is illegal to remove specimens from this location.

