

TREKKING BLACK ROCK HIGH ROCK CANYON



HIGH ROCK CANYON

High Rock Canyon is one of nature's masterpieces. It is a narrow defile cut 800 feet deep through layers of dark lava and multi-colored volcanic ash. The canyon can be traversed by high-clearance four-wheel-drive vehicles except between February 1st and the second week in May when the road is closed to protect wildlife during nesting and lambing times. Hiking is allowed year round. Vehicle camping is restricted to primitive, designated sites only. This is the best place in Black Rock-High Rock Country to view bighorn sheep and raptors. ...



Ending Point
STEVEN'S CAMP
18.6 Miles
41° 29' 25.09" N |
119° 29' 29.03" W

The actual run through High Rock Canyon starts at the South Gate and travels north past the North Gate and on to Steven's Camp.

BLACK
ROCK
EXPLORERS
SOCIETY

www.brxs.org

SOUTH GATE
HIGH ROCK CANYON
41°18'28.01"N |
119°18'17.27"W

Starting Point

**2 miles to
Lund Petrified Forest**

34



14

34

Barley Rd

Barley Rd

The route to both High Rock Canyon, High Rock Lake and Fly Canyon & the PotHoles start at the same point on SR 34.

This book centers on High Rock Canyon.

Starting Point

**1 • 41 miles
from Bruno's Casino**

41° 08' 25.59" N
119° 22' 15.08" W

To GERLACH



www.brxs.org

2 • 2.4 miles
41° 09' 51.65" N
119° 21' 26.89" W

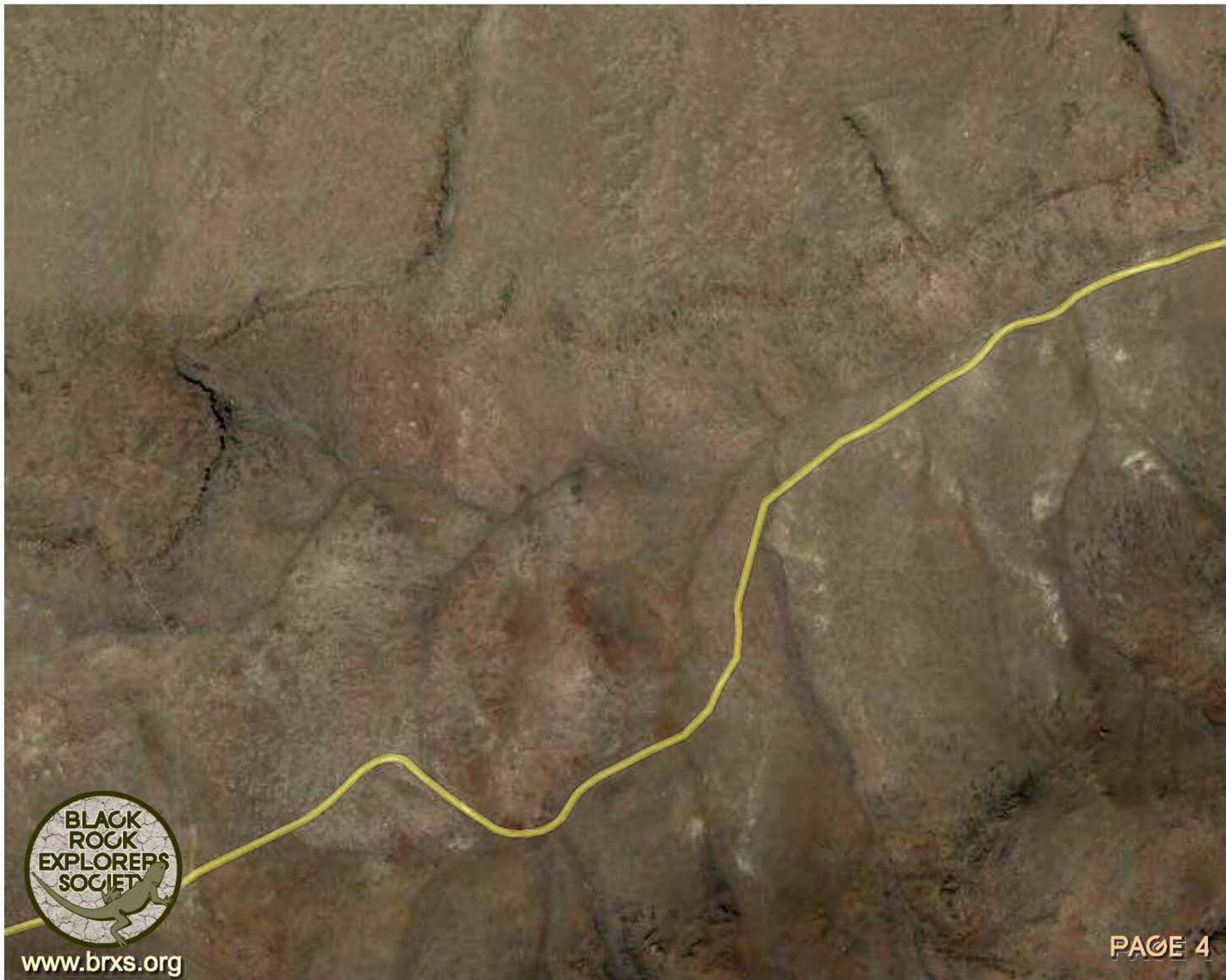


www.brxs.org



www.brxs.org

2 • 2.4 miles
41° 09' 51.65" N |
119° 21' 26.89" W





3 • 5 miles
41° 10' 55.00" N
119° 18' 57.93" W

Flower Spring



www.brxs.org

PAGE 5

6 • 7.5 miles
41° 12' 52.29" N
119° 19' 00.05" W

5 • 7 miles
41° 12' 31.61" N
119° 19' 14.44" W

4 • 6.8 miles
41° 12' 22.98" N
119° 19' 12.79" W

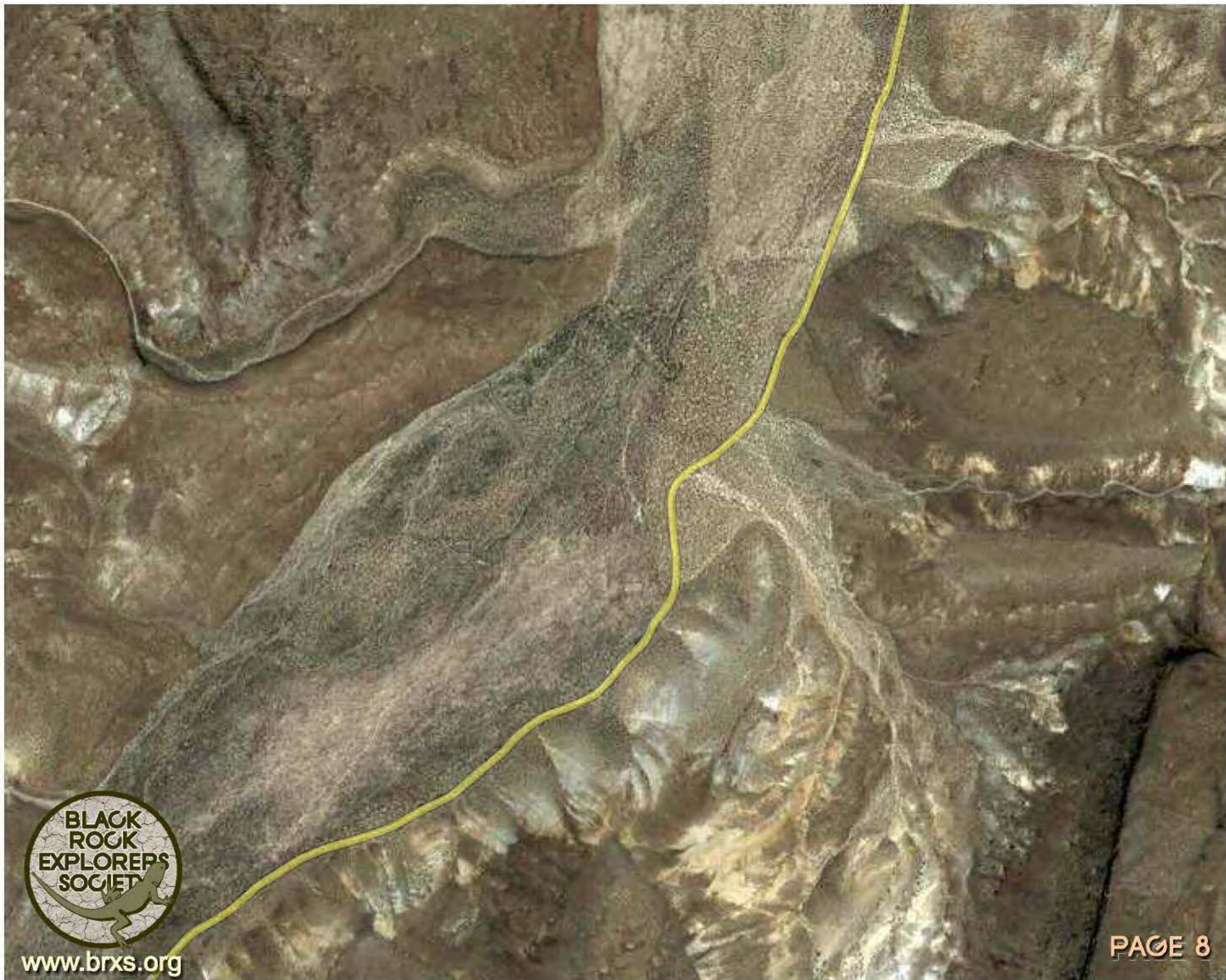
Little Smoky
Creek

McConnell
Canyon





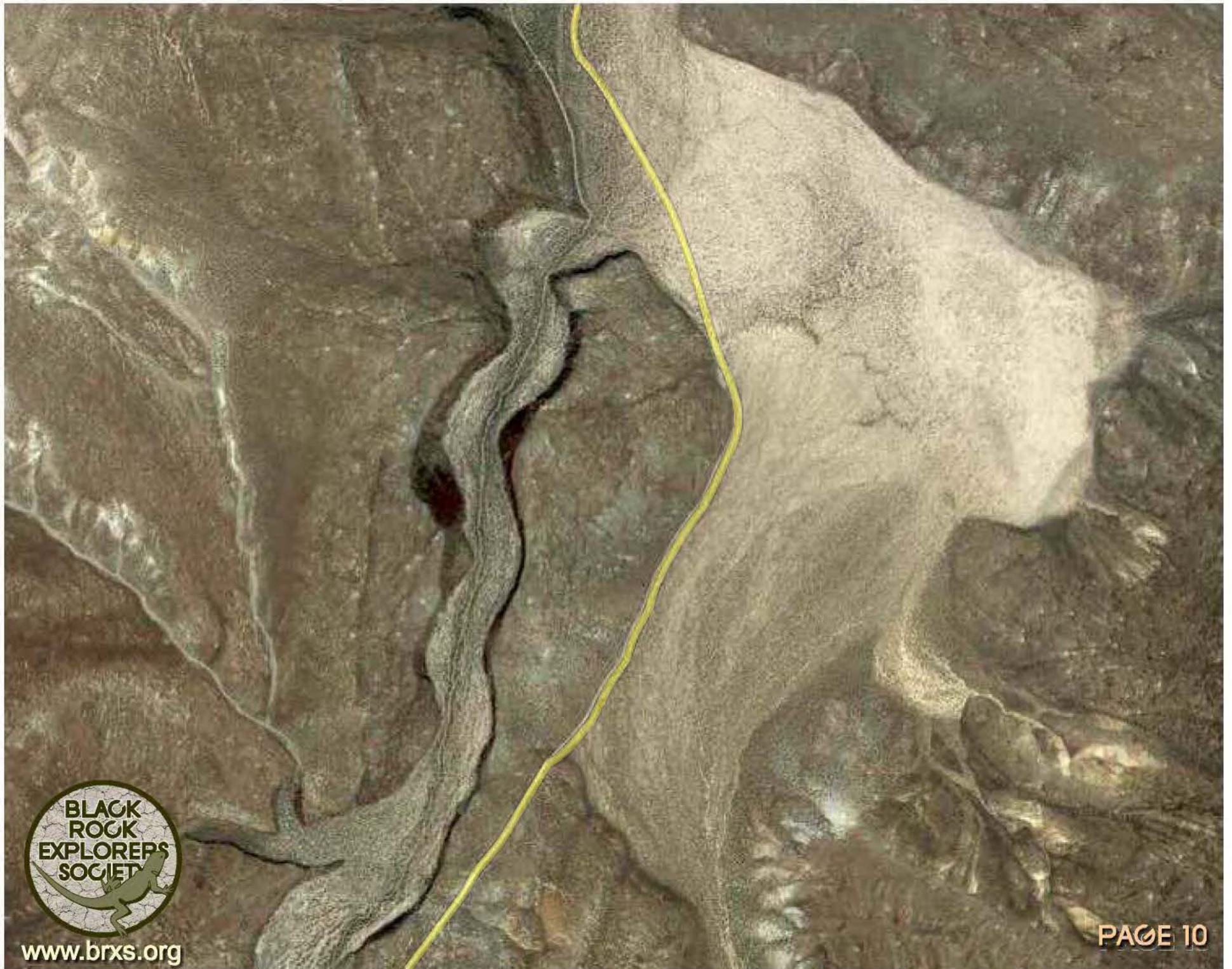
www.brxs.org



www.brxs.org



www.brxs.org



Smoky
Canyon



www.brxs.org

Willow Creek

Little High Rock Creek

At Point 7 on the route heading north you'll find the Little High Rock Hilton, a place of rest for hikers and campers.

✖ Marks its location.

7 • 11.8 miles
41° 16' 06.17" N
119° 18' 25.63" W



www.brxs.org

Smoky
Canyon

PAGE 12



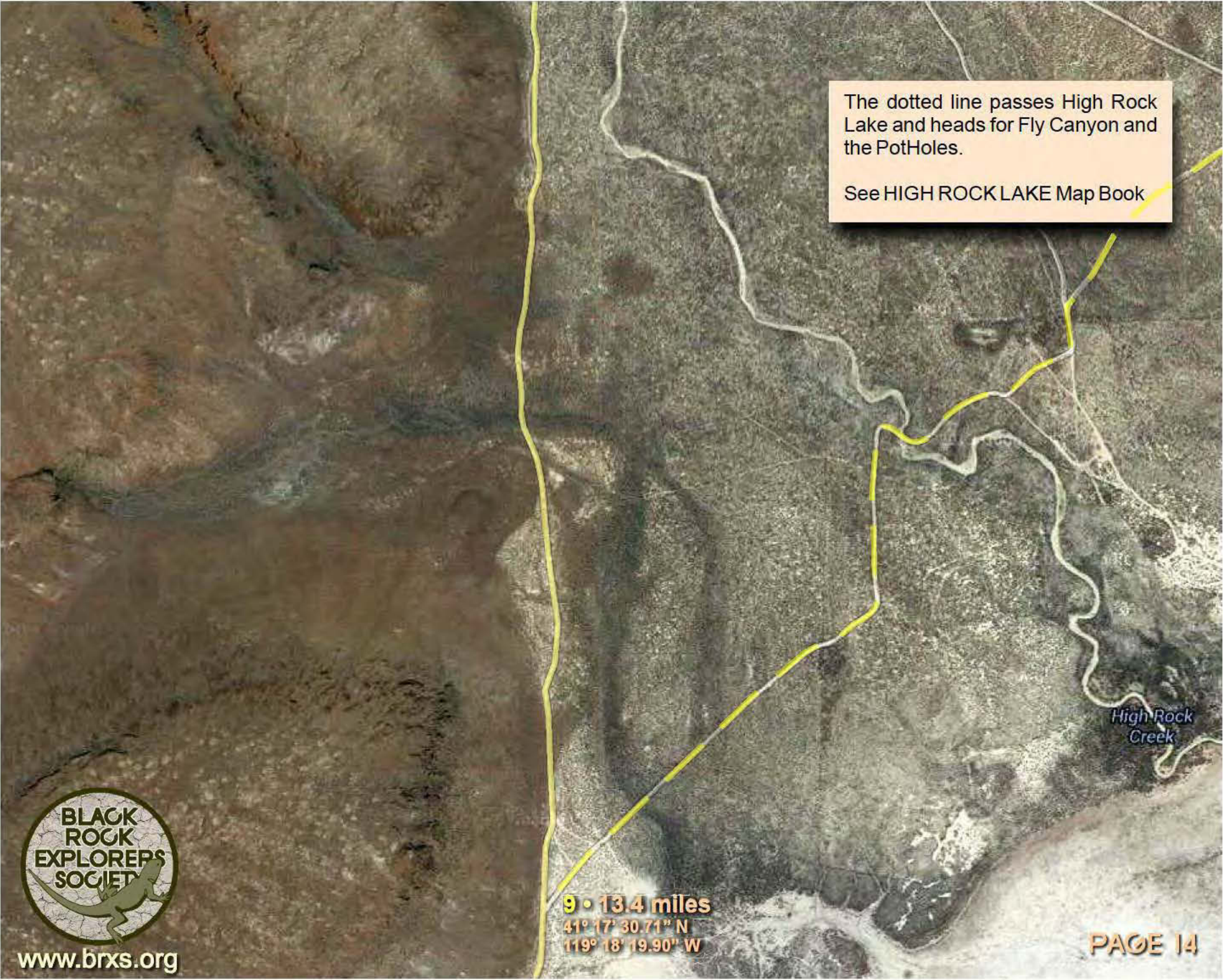
8 • 12.6 miles
41° 16' 46.29" N
119° 18' 22.82" W



www.brxs.org

Willow Creek

PAGE 13

An aerial photograph of a desert landscape. A yellow line, likely a trail or road, runs vertically on the left side and then curves towards the bottom right. A dotted line branches off from the yellow line, passing through a small lake (High Rock Lake) and heading towards the top right. The terrain is rugged and rocky, with some sparse vegetation.

The dotted line passes High Rock Lake and heads for Fly Canyon and the PotHoles.

See HIGH ROCK LAKE Map Book

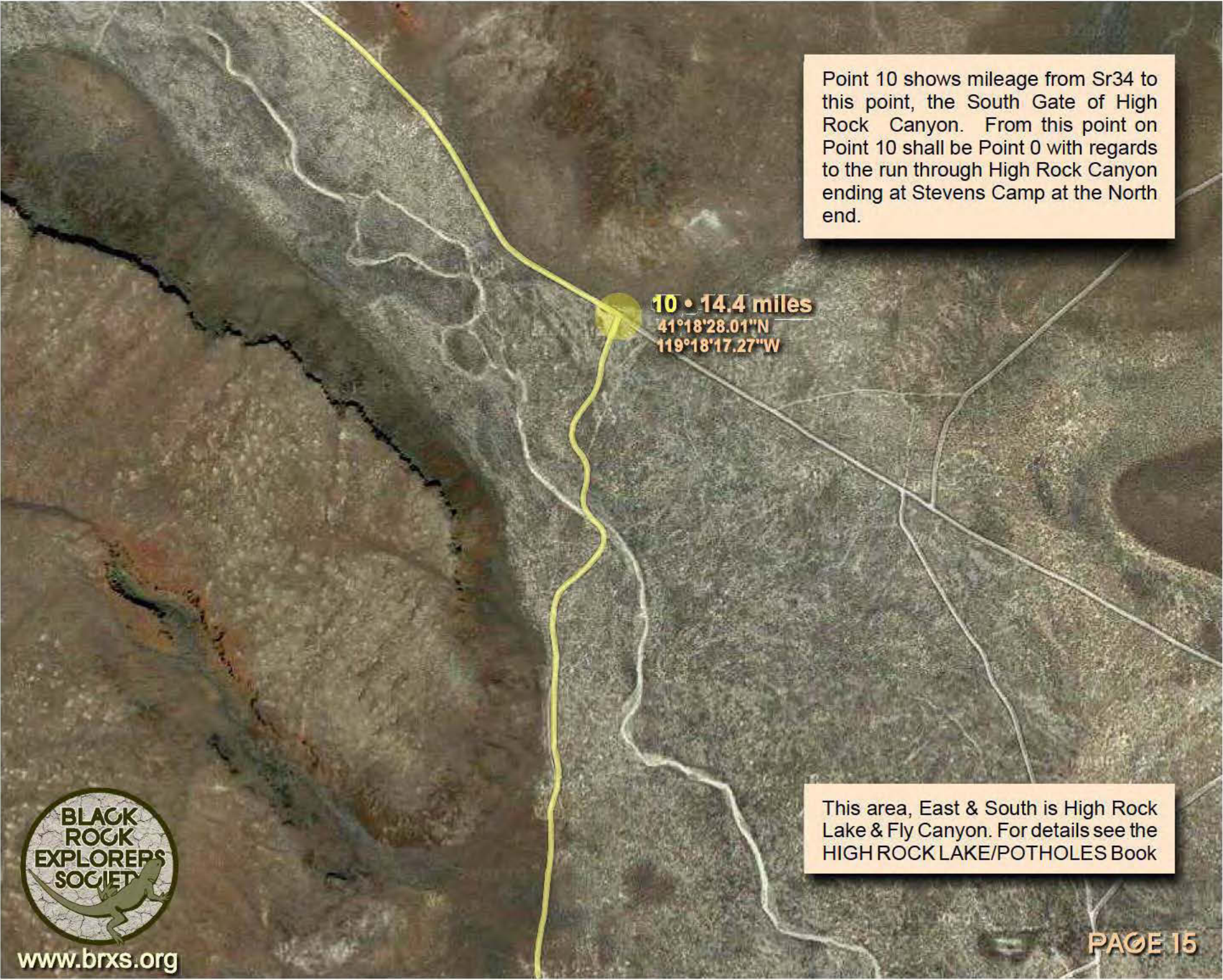
High Rock Creek

9 • 13.4 miles
41° 17' 30.71" N
119° 18' 19.90" W

PAGE 14



www.brxs.org




Point 10 shows mileage from Sr34 to this point, the South Gate of High Rock Canyon. From this point on Point 10 shall be Point 0 with regards to the run through High Rock Canyon ending at Stevens Camp at the North end.

10 • 14.4 miles
41°18'28.01"N
119°18'17.27"W

This area, East & South is High Rock Lake & Fly Canyon. For details see the HIGH ROCK LAKE/POTHOLES Book





1 • .8 miles
41° 18' 49.47" N
119° 18' 59.85" W

0 • 14.4 miles
41° 18' 28.01" N
119° 18' 17.27" W



www.brxs.org



www.brxs.org

1 • .8 miles
41° 18' 49.47" N
119° 18' 59.85" W

PAGE 17



2 • 2.4 miles
41° 19' 40.88" N
119° 20' 16.17" W




5 • 4.2 miles
41° 20' 46.25" N
119° 21' 32.66" W

4 • 4 miles
41° 20' 34.04" N
119° 21' 24.94" W

High Rock Creek

High Rock Creek

At Point 3 is the High Rock Canyon icon of Three Cliffs. Beneath one of them is the Cave known as the Post Office marked by an .

3 • 3 miles
41° 20' 08.43" N
119° 20' 36.85" W



www.brxs.org

Pole Canyon

6 • 4.5 miles
41° 20' 57.63" N
119° 21' 39.54" W

5 • 4.2 miles
41° 20' 46.25" N
119° 21' 32.66" W



www.brxs.org


PAGE 20





www.brxs.org

At Point 7 on the route heading north you'll find the Fox Garage, last remaining structure of the Fox Homestead.

 Marks its location.



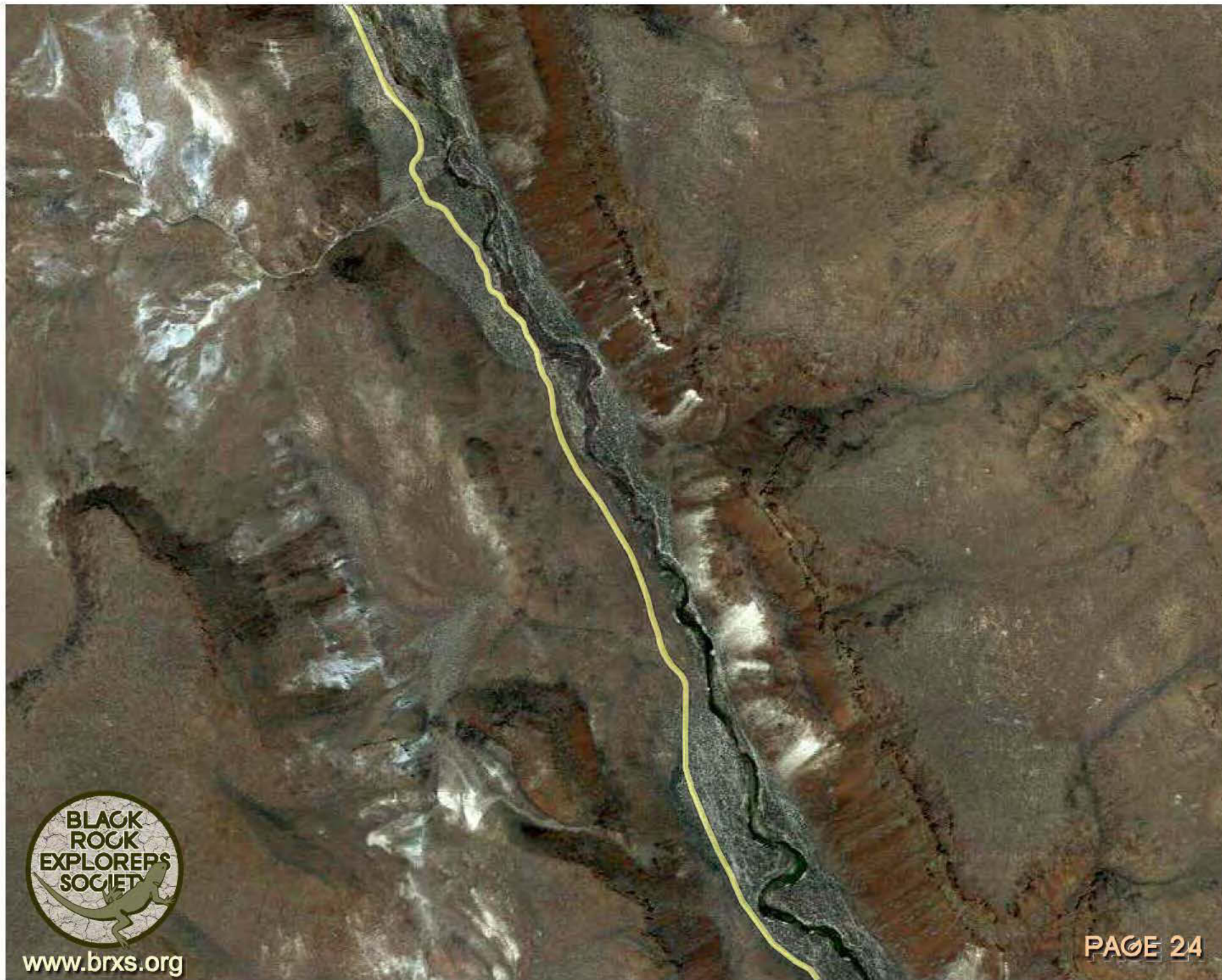
7 • 8.6 miles
41° 22' 57.63" N
119° 21' 39.54" W

*Yellow Rock
Canon Creek*

*Yellow Rock
Canyon*



www.brxs.org



www.brxs.org



8 • 10.4 miles
41° 24' 22.43" N
119° 25' 17.33" W



9 • 11.6 miles
41° 25' 15.27" N
119° 25' 40.30" W

Grassy Canyon



www.brxs.org



10 • 12.4 miles
41° 25' 54.07" N
119° 25' 54.93" W





11 • 13 miles
41° 26' 24.79" N
119° 25' 48.27" W





www.brxs.org

5 • 14.4 miles
41° 09' 51.70" N
119° 21' 26.85" W

PAGE 29





BLACK
ROCK
EXPLORERS
SOCIETY

www.brxs.org

14 • 17.3 miles
41° 28' 52.69" N
119° 28' 33.37" W

High Rock Creek



www.brxs.org

Both roads lead to RT8a and the town of Vya, 24 miles away.



17 • 18.6 miles

41° 29' 25.09" N

119° 29' 29.03" W

At Point 17, 18.6 miles from the South Gate to High Rock Canyon, you will find Steven's Camp. Originally built as a rescue facility for hunters and trappers in bad weather; it is a nice rest at the end of the trail.



Marks its location.

16 • 18.4 miles

41° 29' 18.57" N

119° 29' 36.57" W

15 • 18.3 miles

41° 29' 15.24" N

119° 29' 34.25" W

High Rock Creek

14 • 17.3 miles

41° 28' 52.69" N

119° 28' 33.37" W

PAGE 33



www.brxs.org