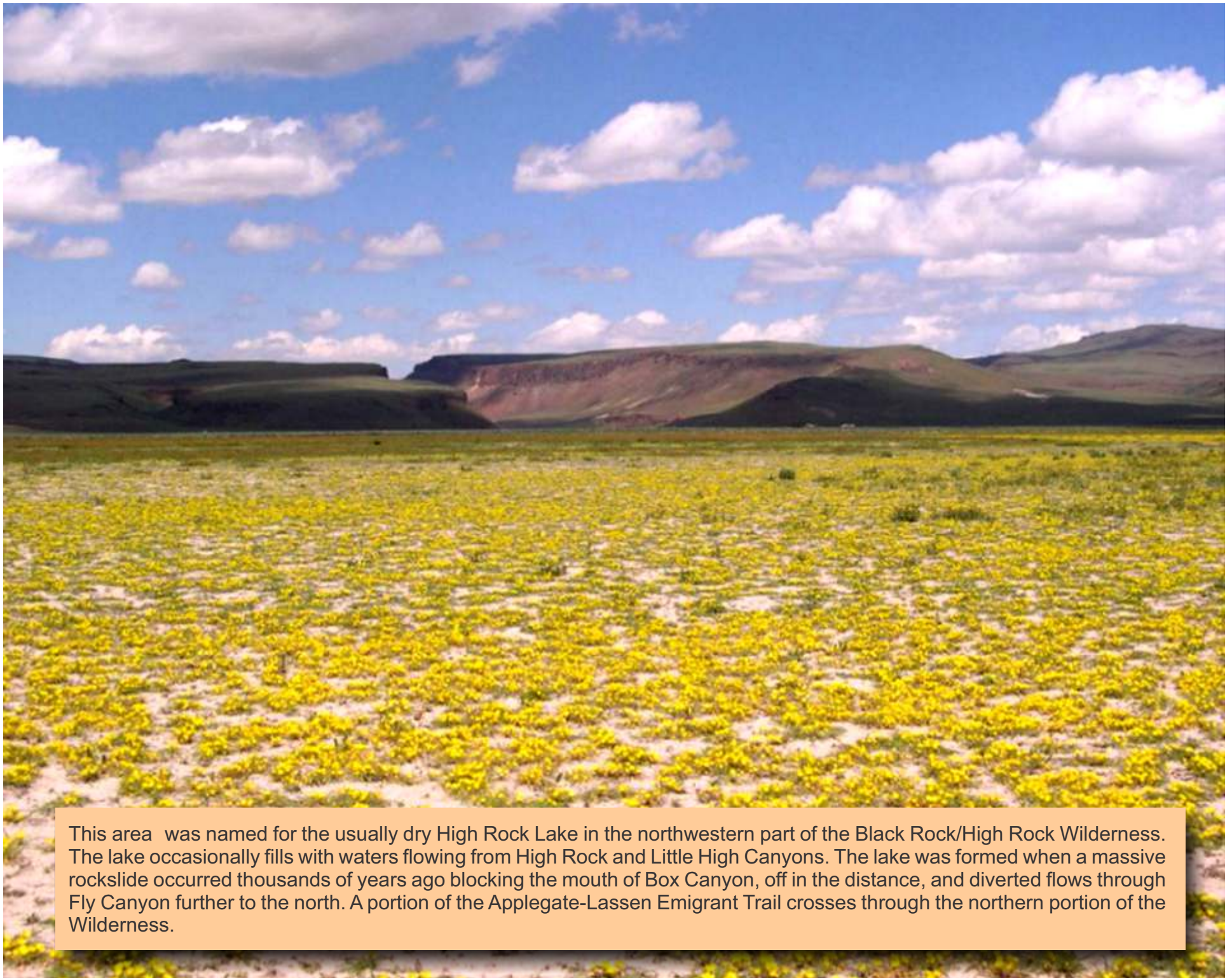


TREKKING 2018

HIGH ROCK LAKE FLY CANYON POTHOLES





This area was named for the usually dry High Rock Lake in the northwestern part of the Black Rock/High Rock Wilderness. The lake occasionally fills with waters flowing from High Rock and Little High Canyons. The lake was formed when a massive rockslide occurred thousands of years ago blocking the mouth of Box Canyon, off in the distance, and diverted flows through Fly Canyon further to the north. A portion of the Applegate-Lassen Emigrant Trail crosses through the northern portion of the Wilderness.

**2 miles to
Lund Petrified Forest**

34



24

34

Barley Rd

Barley Rd

The route to both High Rock Canyon,
High Rock Lake and Fly Canyon & the
PotHoles start at the same point on
SR 34.

This book centers on the latter two.



www.brxs.org

To GERLACH



Starting Point

**1 • 41 miles
from Bruno's Casino**

41° 08' 25.59" N
119° 22' 15.08" W

PAGE 1

2 • 2.4 miles
41° 09' 51.65" N
119° 21' 26.89" W





www.brxs.org

2 • 2.4 miles
41° 09' 51.65" N
119° 21' 26.89" W





3 • 5 miles
41° 10' 55.00" N
119° 18' 57.93" W

Flower Spring



www.brxs.org

PAGE 5



www.brxs.org

6 • 7.5 miles

41° 12' 52.29" N
119° 19' 00.05" W

5 • 7 miles

41° 12' 31.61" N
119° 19' 14.44" W

Little Smoky
Creek

4 • 6.8 miles

41° 12' 22.98" N
119° 19' 12.79" W

McConnell
Canyon









Smoky
Canyon



www.brxs.org

Willow Creek

Little High Rock Creek

At Point 7 on the route heading north you'll find the Little High Rock Hilton, a place of rest for hikers and campers.

✖ Marks its location.

7 • 11.8 miles

41° 16' 06.17" N

119° 18' 25.63" W

Smoky
Canyon



www.brxs.org



8 • 12.6 miles
41° 16' 46.29" N
119° 18' 22.82" W



www.brxs.org

Willow Creek

PAGE 13

South Gate of
High Rock Canyon



11 • 14.1 miles

41° 18' 00.00" N
119° 17' 46.12" W

10 • 14 miles

41° 17' 55.63" N
119° 17' 50.16" W


9 • 13.4 miles

41° 17' 30.71" N
119° 18' 19.90" W

High Rock
Creek

High Rock
Canyon

High Rock Lake, now dry, sets
between Fly Canyon, Northeast,
and Box Canyon, Southeast.


The 3  s are locations of building
remains know as the High Rock
Saloon.



www.brxs.org

Little High
Rock Creek

PAGE 14



The circle to the left is the South Gate Entrance to High Rock Canyon.

The run through High Rock Canyon Is presented in the High Rock Canyon Map Book.

12 • 14.6 miles

41° 18' 09.45" N
119° 17' 31.36" W

13 • 14.7 miles


41° 18' 07.71" N
119° 17' 21.45" W

11 • 14.1 miles

41° 18' 00.00" N
119° 17' 46.12" W



www.brxs.org



The Beginning of Fly Canyon.

BLACK
ROCK
EXPLORERS
SOCIETY

www.brxs.org

PAGE 16

8 miles to
Soldier Meadow Ranch

15 • 17 miles

41° 19' 19.56" N
119° 15' 41.83" W

14 • 16 miles

41° 19' 00.97" N
119° 16' 24.72" W

The PotHoles can be accessed via a dirt trail off the road at the 17 Mile Point. They are located in a Canyon Wash shown by 3 ✖s.

Fly Canyon is located at the 16 Mile Point. This is where water from High Rock Lake flushed Northeastward.





POTHOLES

Although several opinions exist as to how the “potholes”, also known as tanks, were created; they still remain an impressive place to visit.

Water is present in the Spring yet many find it found all year round in the many holes of the canyon.

Fly Canyon can also be accessed from the East coming from Rt200, Soldier Meadows Rd and Soldier Meadows Ranch.

