

TREKKING BLACK ROCK

McFARLANE
HOT SPRINGS





To get to McFarlane Hot Springs it is best to start at the Western Pacific Railroad crossing in Suphur, NV and head straight out Jackson Creek Ranch Rd.

McFarlane Hot Springs is an isolated place visited by only a few people, and most of the time by accident.

The route to McFarlane Hot Springs begins at the railroad crossing at the Old Town of Sulphur and heads in a near straight line to the Northeast.

Set odometers to zero at Jungo Road

1 • 500 feet
CROSSING
40° 52' 26.37" N
118° 44' 10.22" W

OLD TOWN of SULPHUR

START
43 miles
From Gerlach
40° 52' 20.97" N
118° 44' 10.99" W

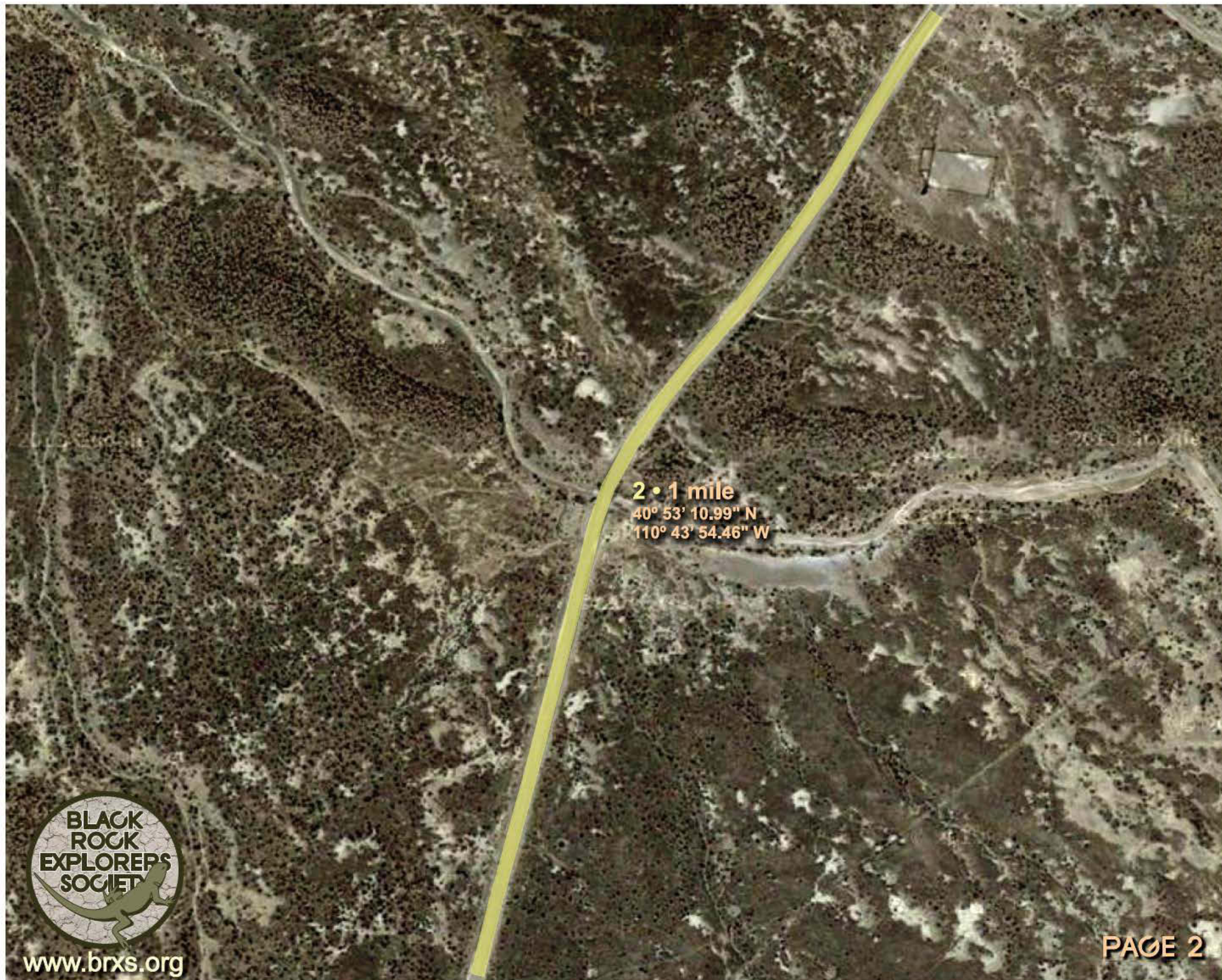
Jungo Rd WINNEMUCCA

GERLACH

PAGE 1

BLACK
ROCK
EXPLORERS
SOCIETY

www.brxs.org






All trails lead to the cattle watering hole

3 • 4.6 miles
40° 56' 10.81" N
118° 42' 34.36" W



www.brxs.org

PAGE 3

An aerial photograph of a desert landscape, likely in the southwestern United States. A prominent yellow line, possibly a road or a survey route, runs vertically through the center of the image. The terrain is rugged and rocky, with various shades of brown and tan. In the lower right, there is a lighter-colored, more textured area that could be a dry riverbed or a different geological formation. The overall image has a grainy, high-contrast appearance typical of aerial photography.

4 • 6 Miles
40° 57' 17.22" N
118° 42' 09.89" W



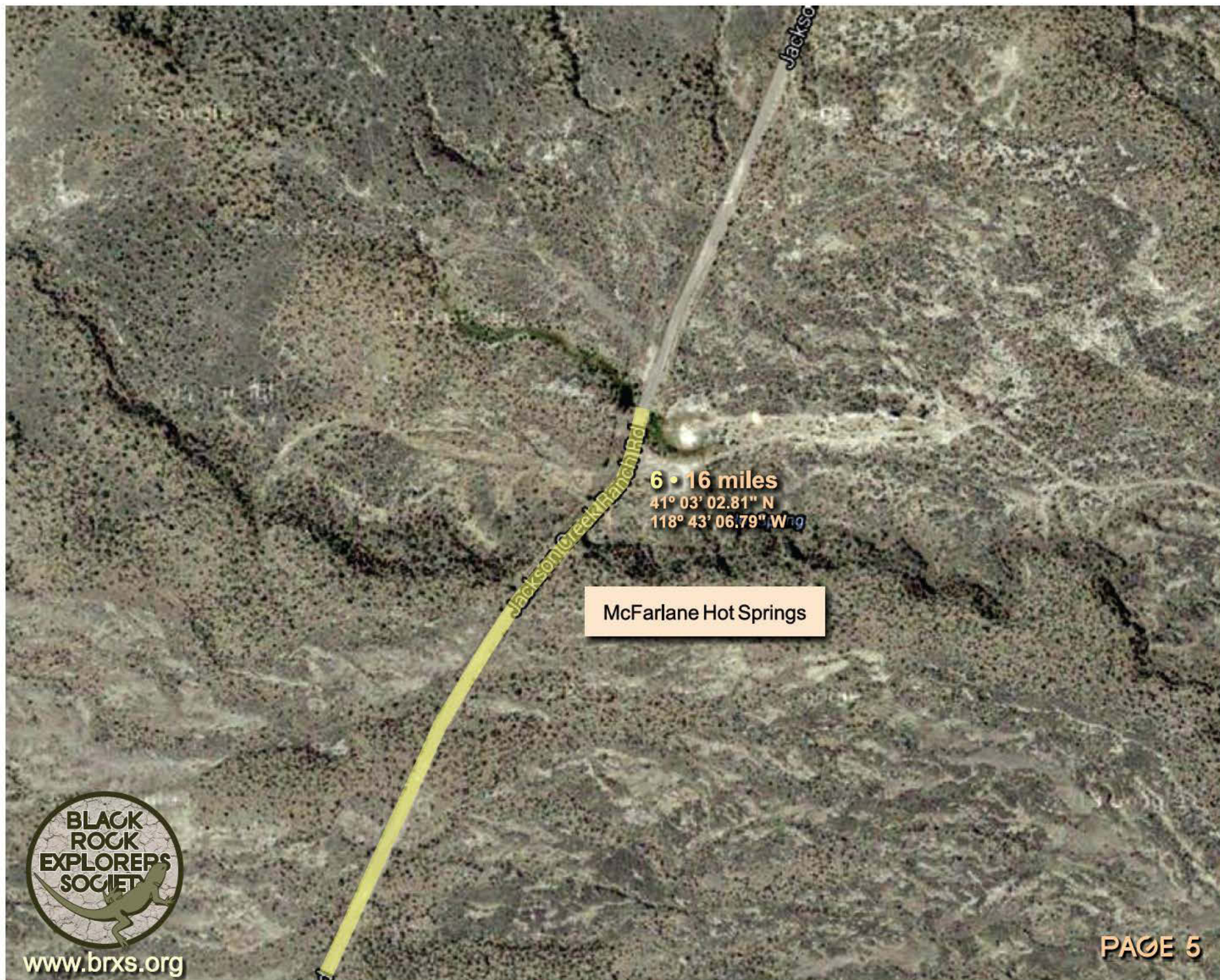
www.brxs.org

Jackson Creek Ranch Rd

This road dead ends before reaching the Playa.

5 • 11.7 miles
40° 02' 07.82" N
118° 43' 24.58" W





Natural spring into a dark pool.
Interesting

Jackson Creek Ranch Rd

MacFalane Hot Spring with a modified
clear pool - still it's hot!

Jackson Creek Ranch Rd

