

TREKKING BLACK ROCK NIGHTINGALE WEST





As can be seen there are three roads leading to the Nightingale Mining District from Nixon. All three are on Paiute Lands so a permit is required, to a point.

The easiest access is at point A, which is where we usually begin.



Marble Bluff

2 • 1.6 miles
39° 52' 17.40" N
119° 21' 33.99" W

1 • .76 miles
39° 51' 35.78" N
119° 21' 59.86" W

The shortest route for the Nightingale District
(15.9 miles) starts at Point A

STARTING POINT
0 • 0 miles
39° 51' 03.25" N
119° 22' 22.80" W



www.brxs.org

Road in red head for the East side of Rt 447

4 • 3.07 miles
39° 53' 27.21" N
119° 21' 04.04" W

3 • 2.6 miles
39° 52' 46.18" N
119° 21' 13.67" W

Valley Road comes in from the right



www.brxs.org

Roads in red head for the East side of Rt 447

5 • 6.07 miles
39° 55' 28.78" N
119° 19' 27.41" W



www.brxs.org

Route up the west side of the Nightingale Mountain Range to the "Citadel" which is the remains of the Nightingale Mining District on the West side on the Nightingale Mountains.

Coyote Canyon

Dotted line heads for the Mining District on the East side of the Nightingale Mountains
See Nightingale East MapBook

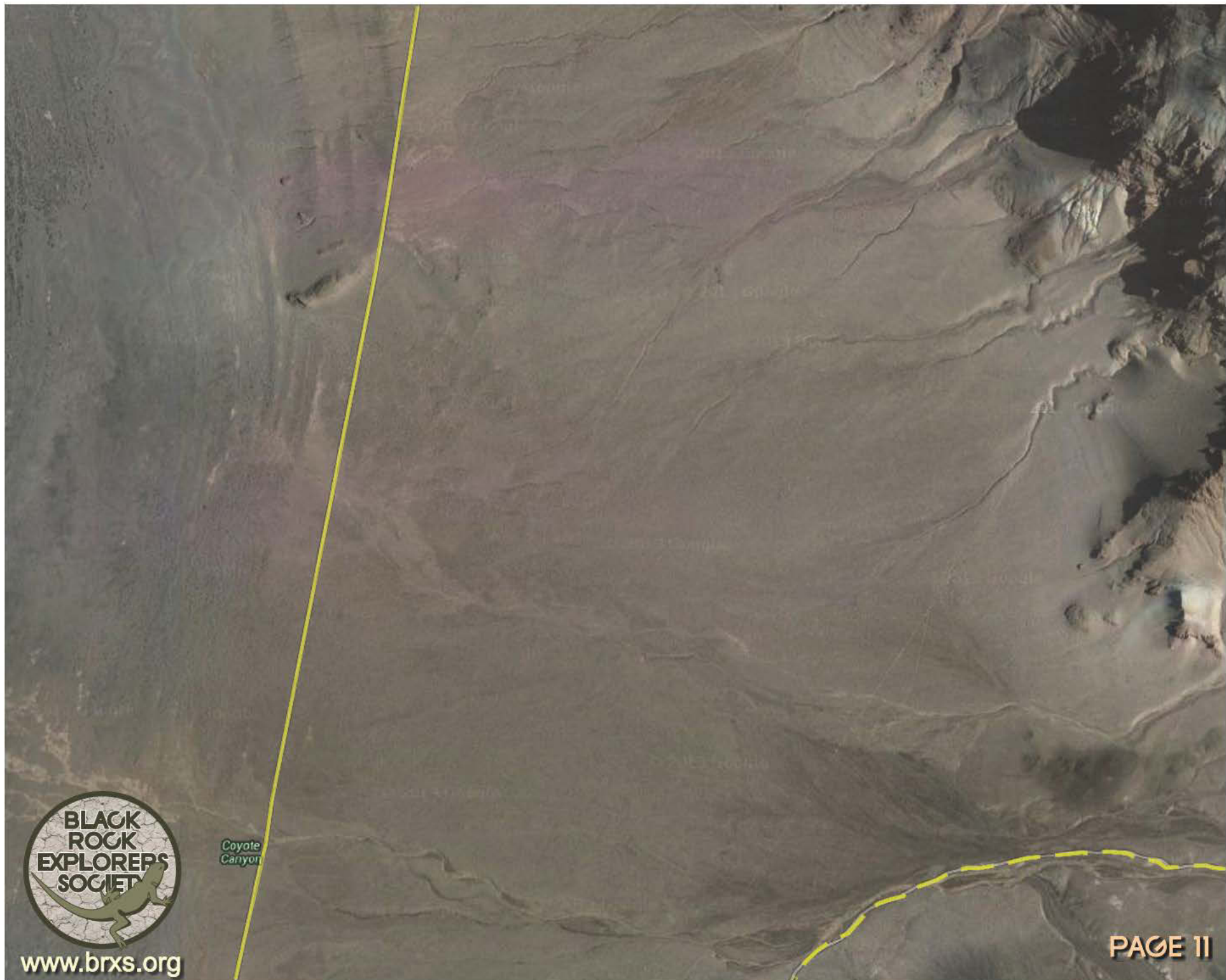
7 • 8.11 miles
39° 57' 21.33" N
119° 16' 32.41" W



www.brxs.org

6 • 7.5 miles
39° 56' 23.50" N
119° 18' 24.39" W

Point 6 is a side road just off map.



Coyote
Canyon

www.brxs.org

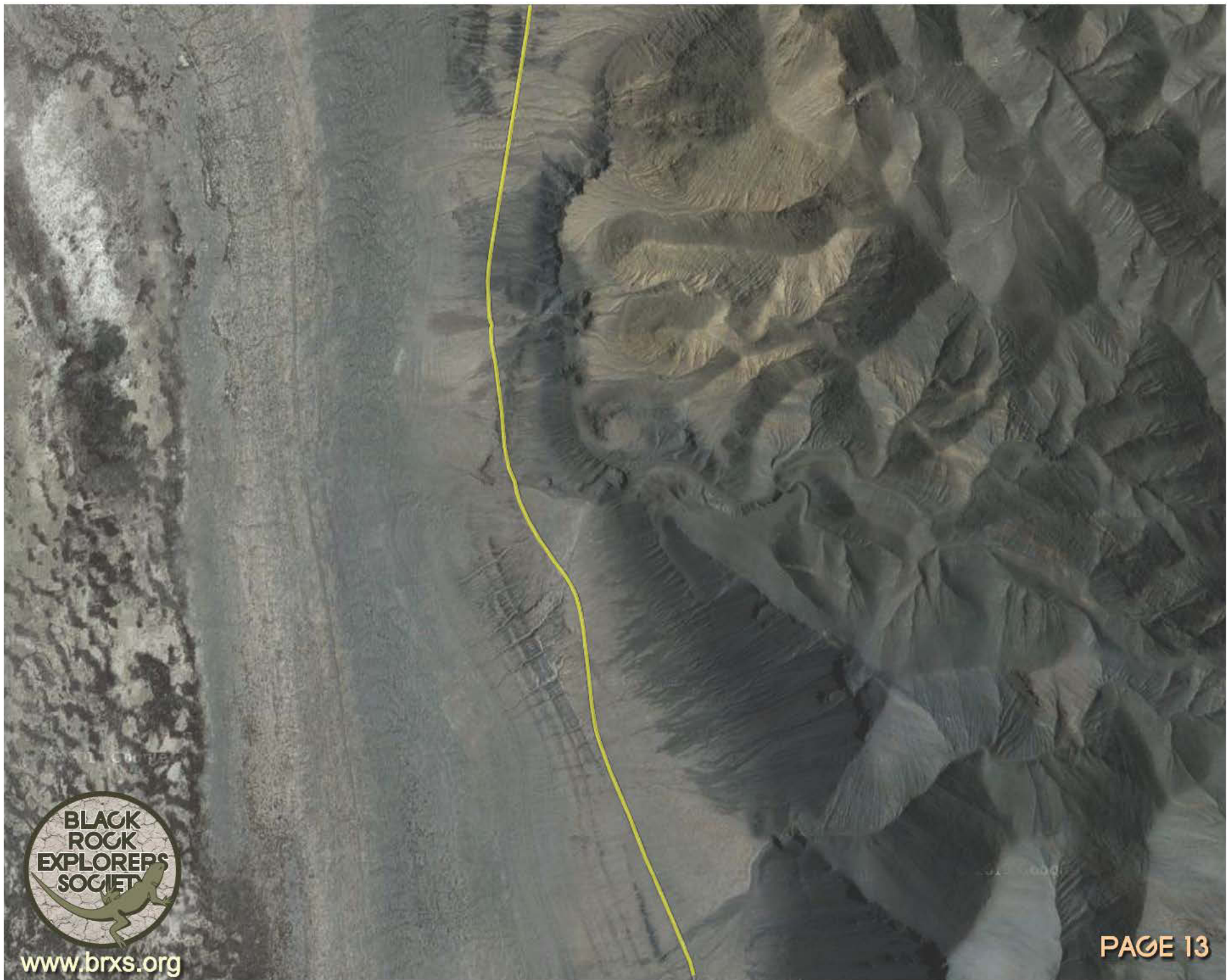
PAGE 11




www.brxs.org

8 • 11.6 miles
39° 00' 59.23" N
119° 17' 32.20" W

PAGE 12



www.brxs.org



Point 9 is the Nightingale Mine on
the West side of the Nightingale
Mountains

9 • 15.6 miles
40° 03' 00.57" N
119° 17' 40.46" W





The Nightingale Mining District on the West side of the Nightingale Mountains. Known as the Citadel it is a planned destination of a 2015 Trek.

See next page for a 3D view.



www.brxs.org



www.brxs.org

© 2014 Google