

TREKKING BLACK ROCK SAWTOOTH KNOB



SAWTOOTH KNOB off in the distance identifies a large area known for Placer Gold. It is easy to find and offers an ideal location for rock collecting and Gold Prospecting.



The home of John & Sylvia Huntington still stands, though long abandoned. Several out buildings also remain. The Huntingtons lived there from 1937 until the early 50's when they past away. The homestead sits in the middle of a large Pacer Gold area identified by Sawtooth Knob. Modern day amateur prospectors roam this area and retrieve Gold flakes & nuggets, making their digging worth a good weekend

Back in the days when the town of Jungo was alive this area was crawling with people in search of gold & silver. When Jungo died people still carried on in the Sawtooth area and what has become the Huntington Homestead was built in an effort to start a new mining town, but the gold was not enough to sustain the place. The Huntingtons got the land through a court battle and it became just their home.



The map shows several digs and washes where Placer Gold was/is found by today's modern amateur prospectors. Sawtooth is just one of Northern Nevada's Placer Gold locations. Other nearby Placer sites include Rabbit Hole, Rosebud, Placerities, Rye Patch and Kumiva Valley.



Placer gold means gold that is in the form of loose individual grains which has eroded out of the host rock in mountains and hills freeing it so they can be recovered without further crushing of the host rock. This includes things such as gold flakes and nuggets. This is the type of gold which is of the greatest interest to individual prospectors. Placer gold has been mined from gravel deposits throughout the western US in many different types of environments, both forest and desert. Over 64% of the gold produced in California has come from placer deposits, while in Nevada, most of the gold has come from working within the original hard rock formations. All told there is still a big bunch just lying around.



You will notice SAWTOOTH KNOB (To the right) is not that far from Sulphur (To the left) and the Hycroft Mining Facility. The turn-off is actually well before you get to Jungo and about 45 miles from Winnemucca.



www.brxs.org





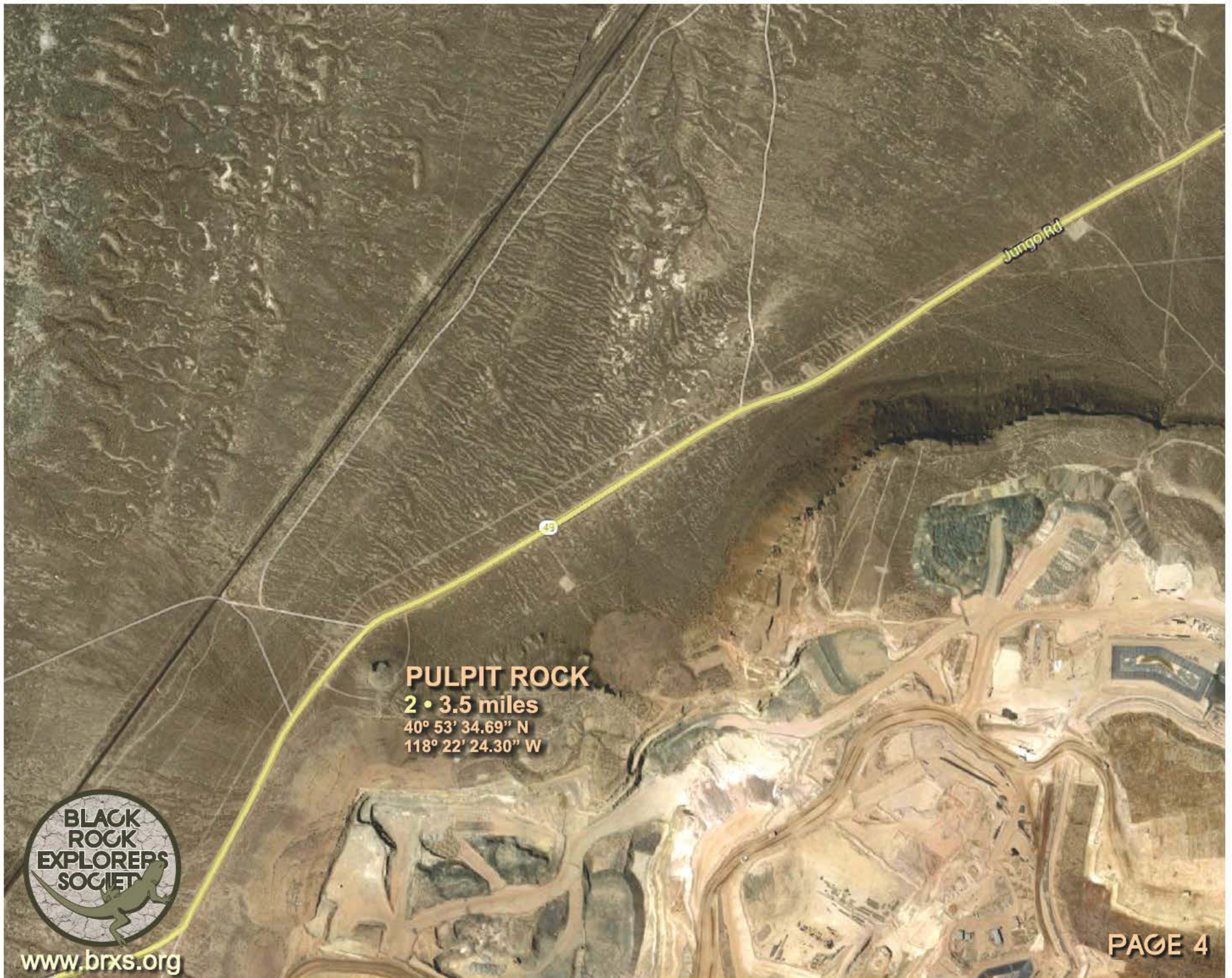
2 • 3.5 miles
40° 53' 34.69" N
118° 22' 24.30" W

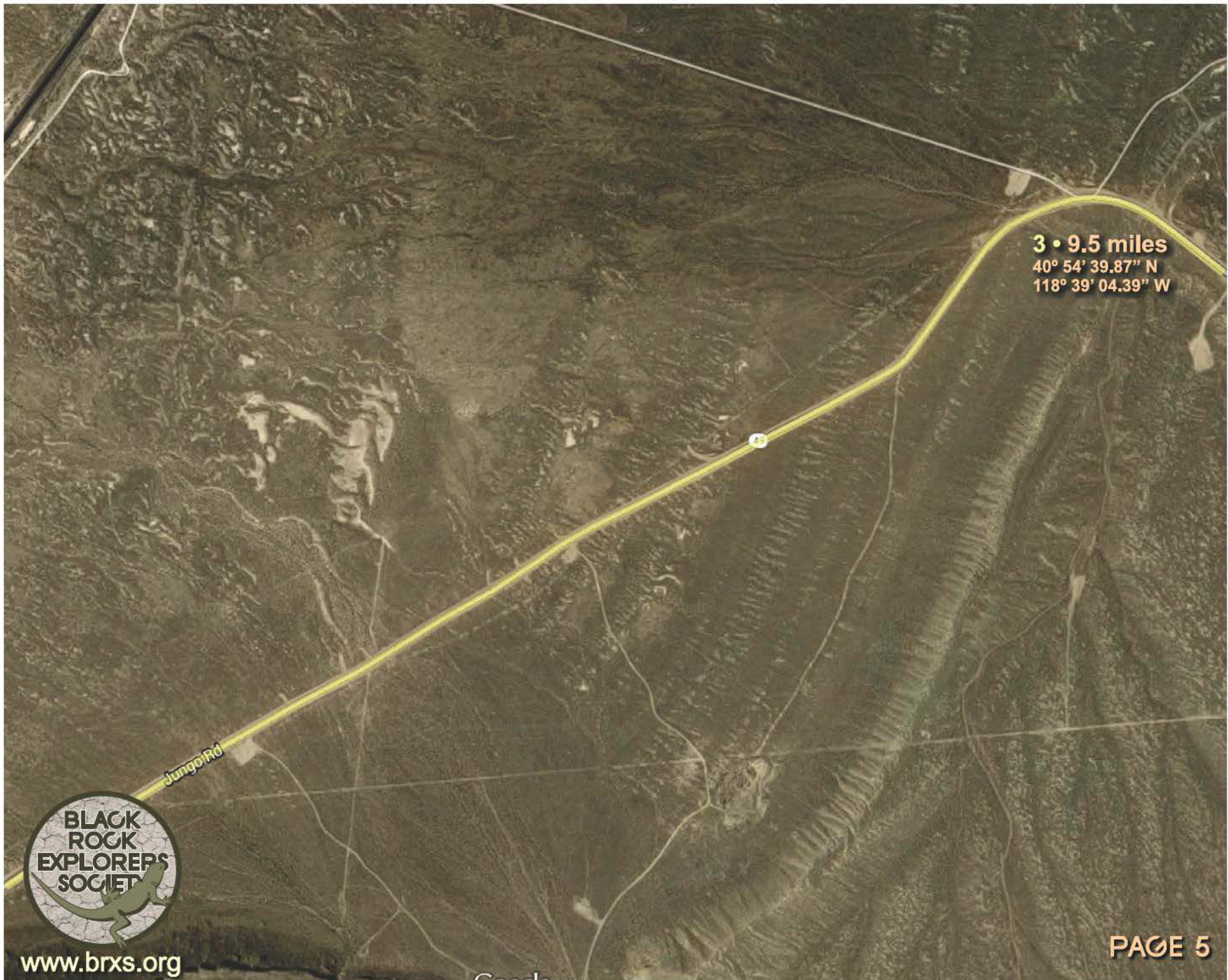


www.brxs.org

Google

PAGE 3





3 • 9.5 miles
40° 54' 39.87" N
118° 39' 04.39" W

Jungo Rd

Mandalay
Spring

9

4 • 10.9 miles
40° 53' 58.52" N
118° 37' 51.84" W

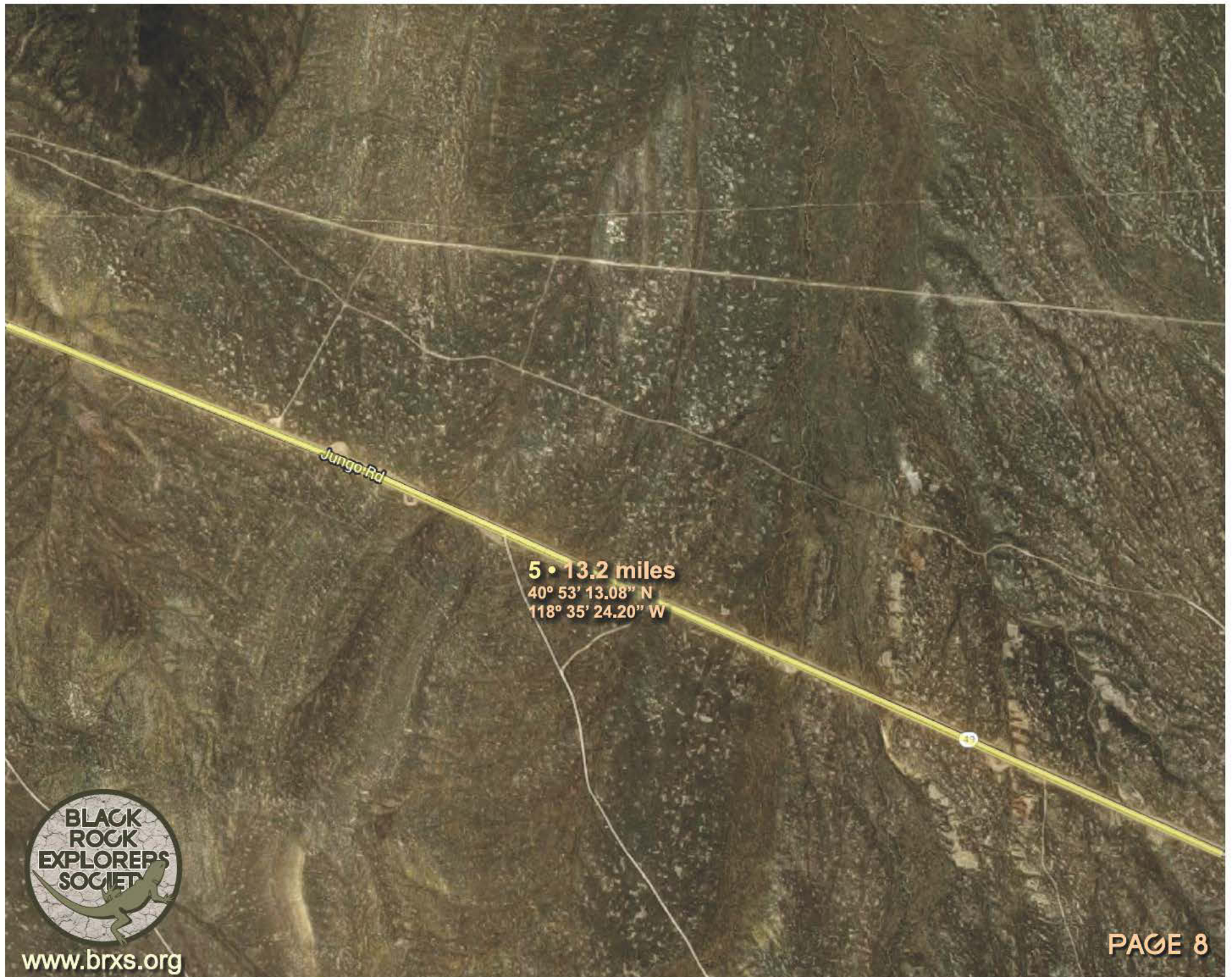


www.brxs.org

Google

PAGE 6







www.brxs.org

6 • 11 miles
40° 52' 45.92" N
118° 34' 45.92" W



TURN OFF
7 • 11.5 miles
40° 52' 46.96" N
118° 33' 30.96" W





www.brxs.org

Google

8 • 15.6 miles
40° 51' 55.77" N
118° 33' 33.12" W

PAGE 11



HUNTINGTON HOMESTEAD

8 • 15.6 miles

40° 51' 55.77" N

118° 33' 33.12" W

BLACK
ROCK
EXPLORERS
SOCIETY

www.brxs.org

Google

PAGE 12



SAWTOOTH KNOB



www.brxs.org

Google

PAGE 14