

TREKKING 2016

SEVEN TROUGHS
MINING AREA



SEVEN TROUGHS

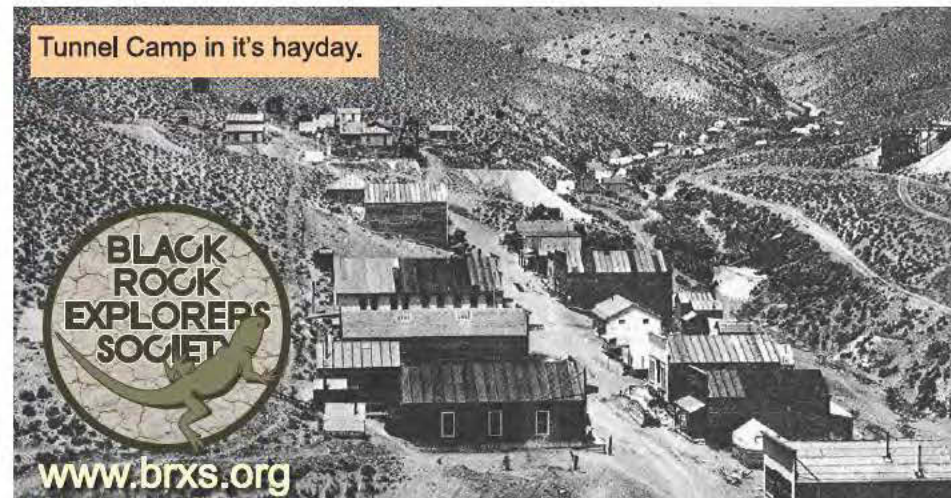
Seven Troughs was a mining community located about 30 miles West of Lovelock, NV. It rested mainly on the East side of the Seven Troughs Mountain Range bordering the Black Rock Desert. Today it is a vast remain of "towns", old structures, mines and their remains.

Vernon and Farrell still remain on most maps while the almost modern remains of Tunnel Camp, considered by modern authorities to be just a camp, is unmarked.

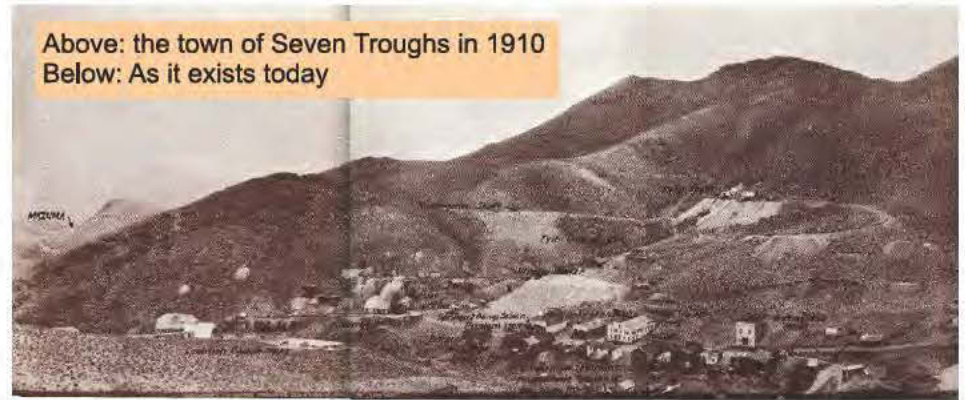
The unknown town of Mazuma made national news back in 1912 when a 20' high wall of water crashed through Seven Troughs Canyon and wiped out the town.

At this time, L.A. Friedman began to buy various mining properties in the area. He had an idea to construct a deep tunnel to drain the mines in the district flooded back in the 1912 flood. In 1919, work actually began on the "Deep Tunnel," however it progressed at an extremely slow rate, as all work was done by hand. By 1926, the tunnel had reached only 506 feet.

In addition to drainage for the mills at Seven Troughs, the Deep Tunnel was also anticipated to transport ore from the mines to Tunnel Camp. The tunnel was completed around 1930 at a level 700 feet above the drainage point. The project was declared useless and abandoned.



Above: the town of Seven Troughs in 1910
Below: As it exists today



Tunnel Camp was originally called Seven Troughs and did not receive its name of Tunnel Camp until 1926 when a full pledged town had been constructed in anticipation of the great tunnel project.

The area, all of its "towns" and mining operations ceased all operations around 1937 and today exist in scattered ghost towns.

Also near Tunnel Camp there still remains a cemetery for those who perished in the flood of July 18, 1912.



SEVEN TROUGHS RANGE

B

TUNNEL CAMP

BLACK MTN

TRINITY PASS

Trinity Peak

WINEMUCCA, NV
72 miles North

Lovelock

FERNLEY, NV 60 miles South

Tunnel Camp, the heart of the Seven Troughs "towns", is located 25 miles Northwest of Lovelock. This Map Book shows the starting point on the North side of Lovelock and ending at Tunnel Camp.

The area can also be accessed from Kumiva Valley. See the BLACK MTN/TUNNEL CAMP Map Book.

From Tunnel Camp access to other sites such as Vernon, Masuma, Seven Troughs Canyon, Farrell and a number of other locations can be had.

See the next page for various locations.



www.brxs.org

The sites marked on this map are but just a few of the locations peppered throughout the Seven Troughs Area.

From the Jail at Vernon to the Post Office, still recognized by the US Postal Service, in Farrell; From the mine remains all over the place to what's happening in Wildcat Canyon, literally days can be spent exploring.

This is a major destination for any Black Rock Explorer.

Seven Troughs
Range HP

Seven Troughs
Mountain

WILDCAT CANYON

AMERICAN FLAT CANYON

FARRELL

SEVEN TROUGHS CANYON

MAZUMA

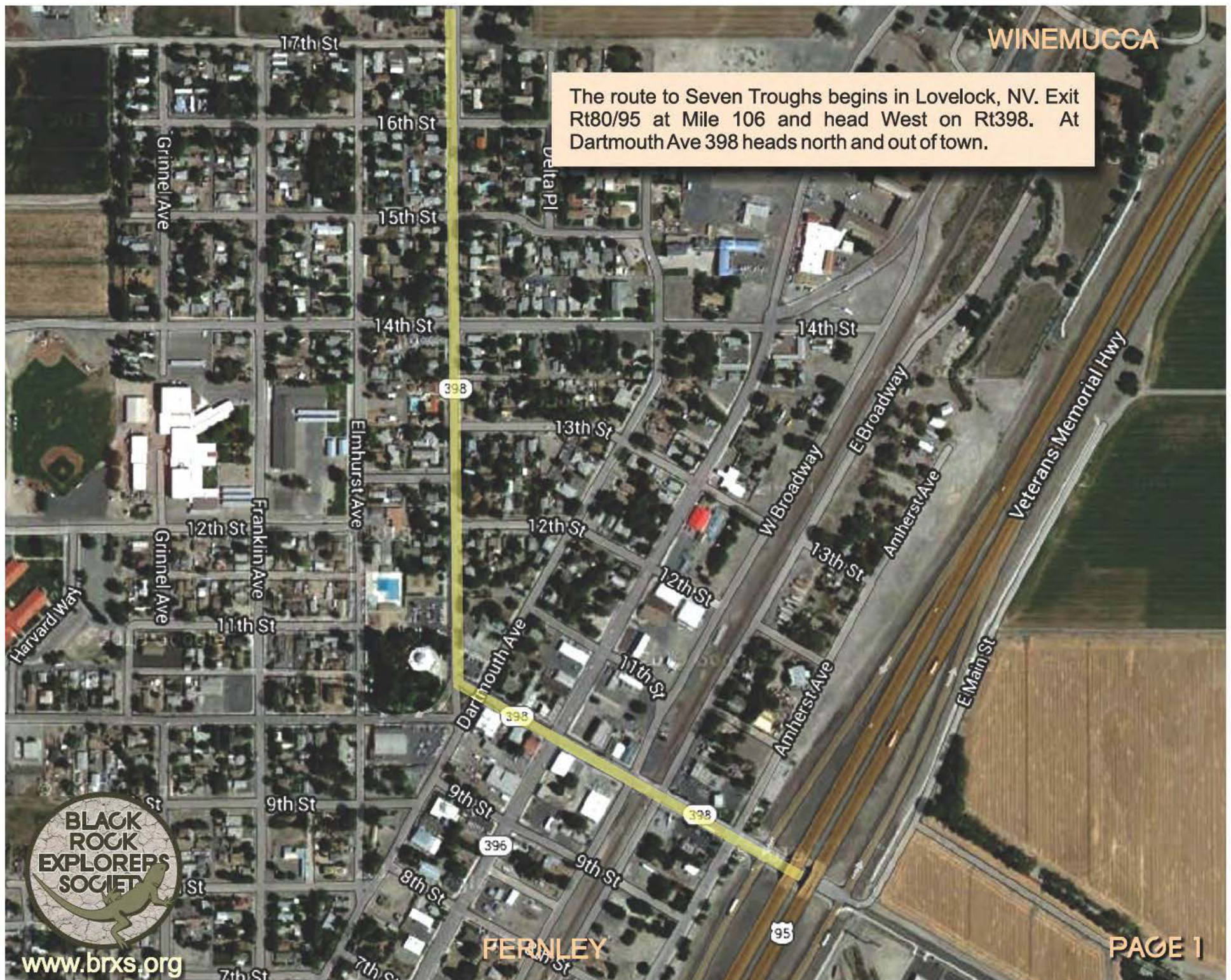
TUNNEL CAMP

VERNON



www.brxs.org

The route to Seven Troughs begins in Lovelock, NV. Exit Rt80/95 at Mile 106 and head West on Rt398. At Dartmouth Ave 398 heads north and out of town.



399

Starting Point

1 • 0 miles

40° 12' 07.93" N

118° 28' 34.17" W

398

Route 398 heads out of town and crosses Rt399. The intersection of 398N and 399W will become the STARTING POINT and Mile Mark 1 at 0 Miles.

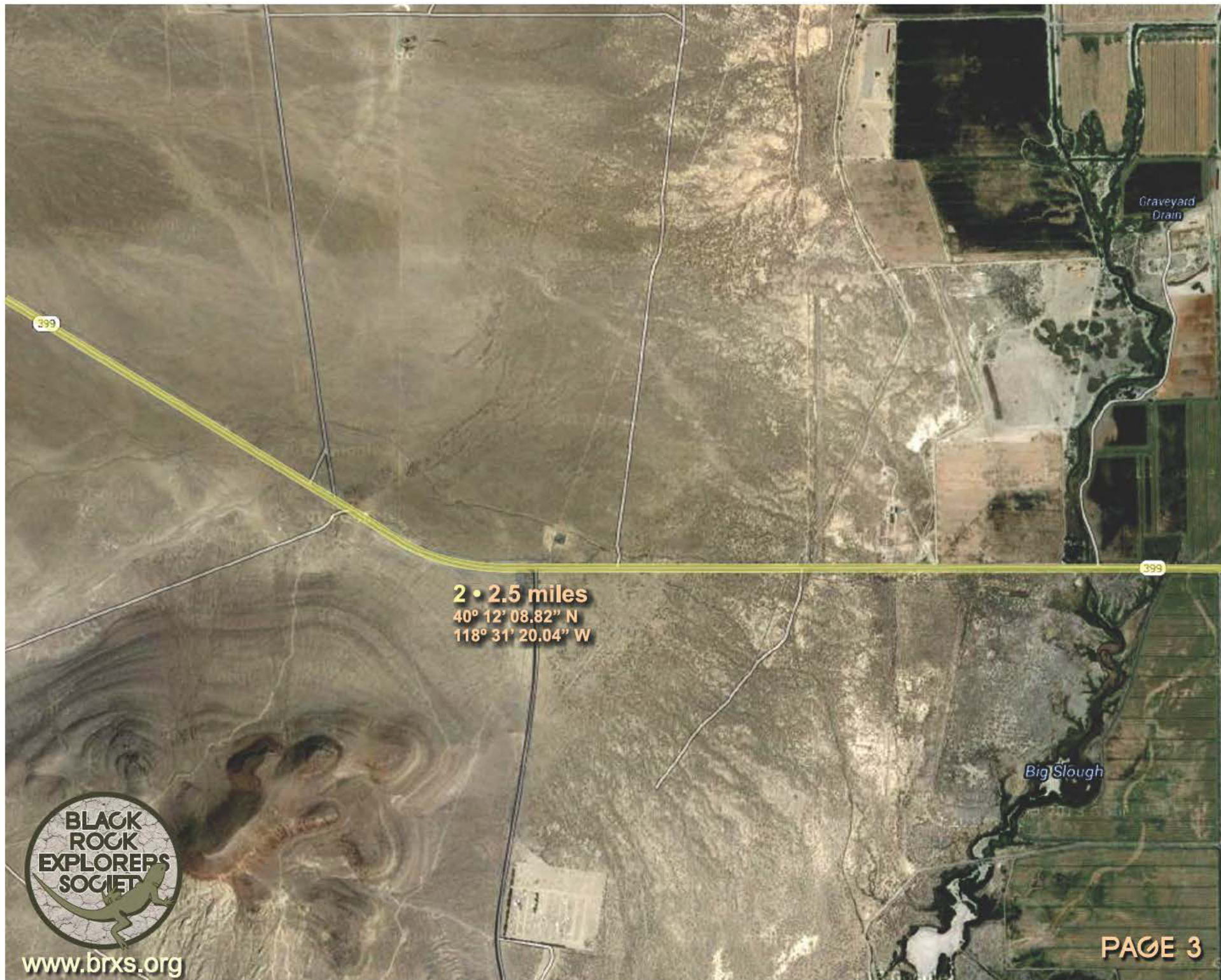
Turn left on Rt399, a two lane black top road, and head West to a dirt road marked Seven Troughs/Sulphur - ! You can't miss it.

398



www.brxs.org

PAGE 2



Graveyard
Drain

399

2 • 2.5 miles
40° 12' 08.82" N
118° 31' 20.04" W

Big Slough



www.brxs.org

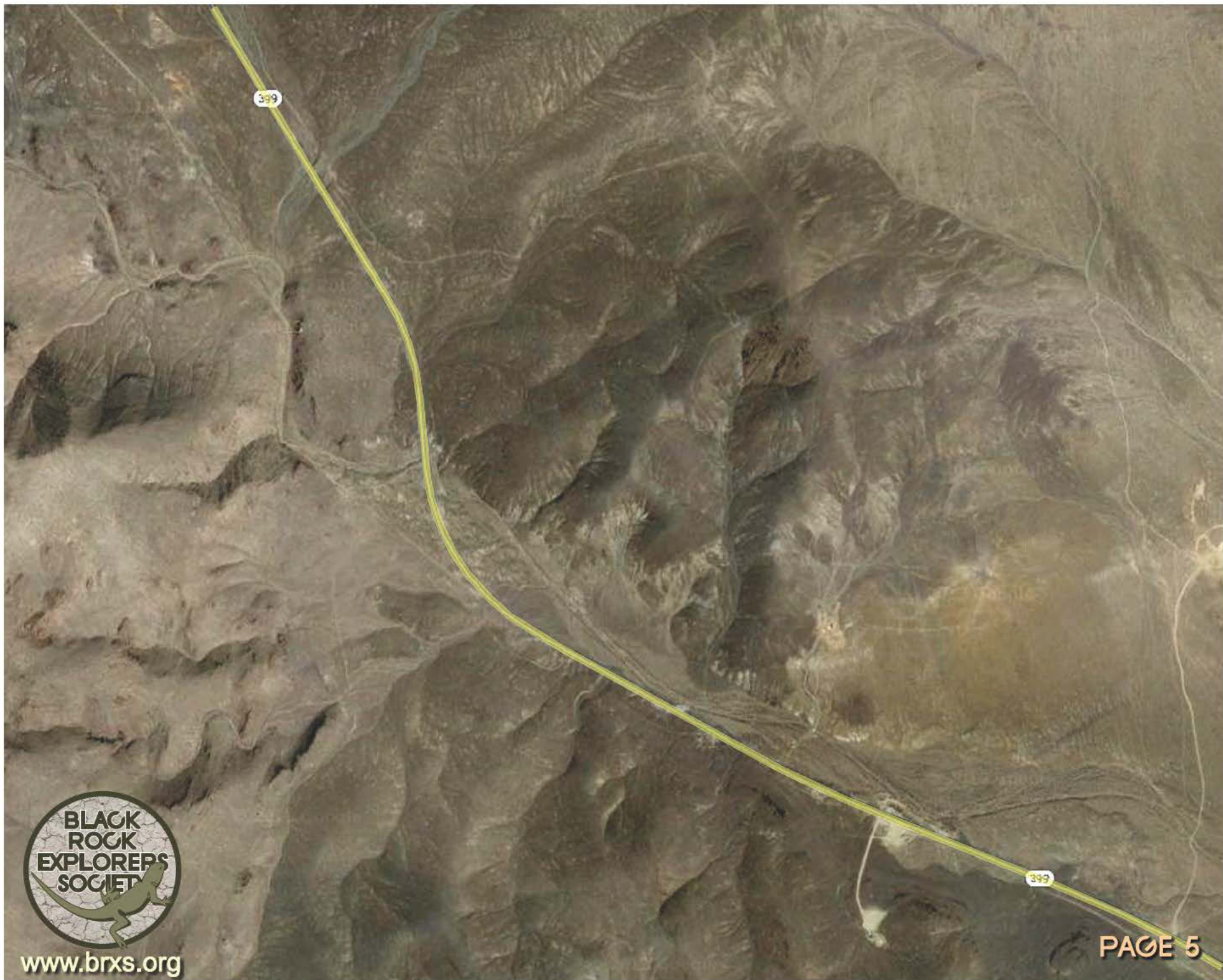
4 • 4.5 miles

**40° 13' 04.42" N
118° 33' 20.12" W**

3 • 4 miles

**40° 12' 53.43" N
118° 32' 56.48" W**





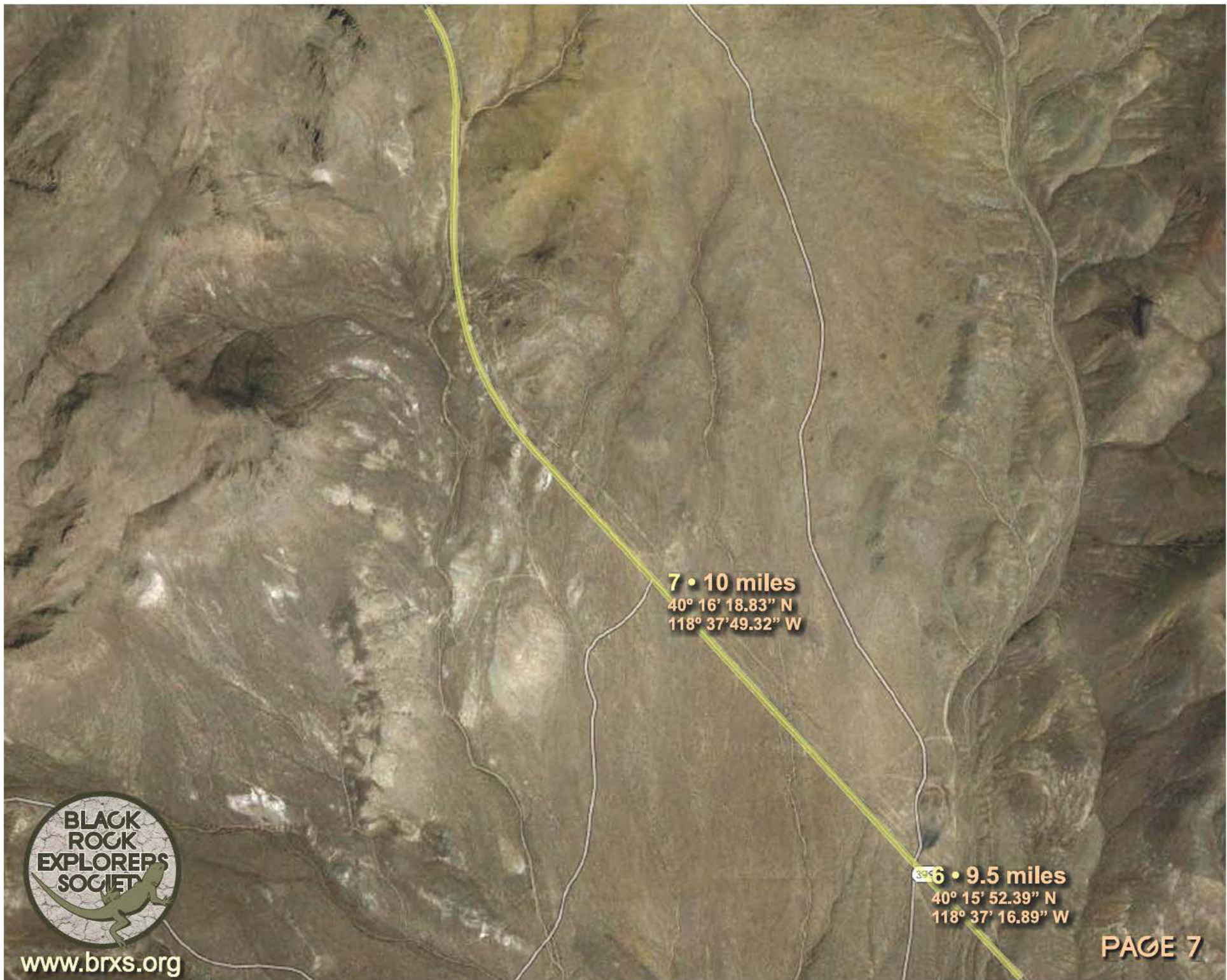
www.brxs.org

399 6 • 9.5 miles
40° 15' 52.39" N
118° 37' 16.89" W

5 • 8 miles
40° 14' 59.55" N
118° 36' 01.43" W



www.brxs.org



10 • 12.6 miles

40° 18' 11.86" N
118° 39' 03.81" W

9 • 12 miles

40° 17' 49.60" N
118° 38' 44.51" W

At Point 9 • 12 miles out of Lovelock, Rt399 curves West. A dirt road on the right is marked Seven Troughs/Sulphur.

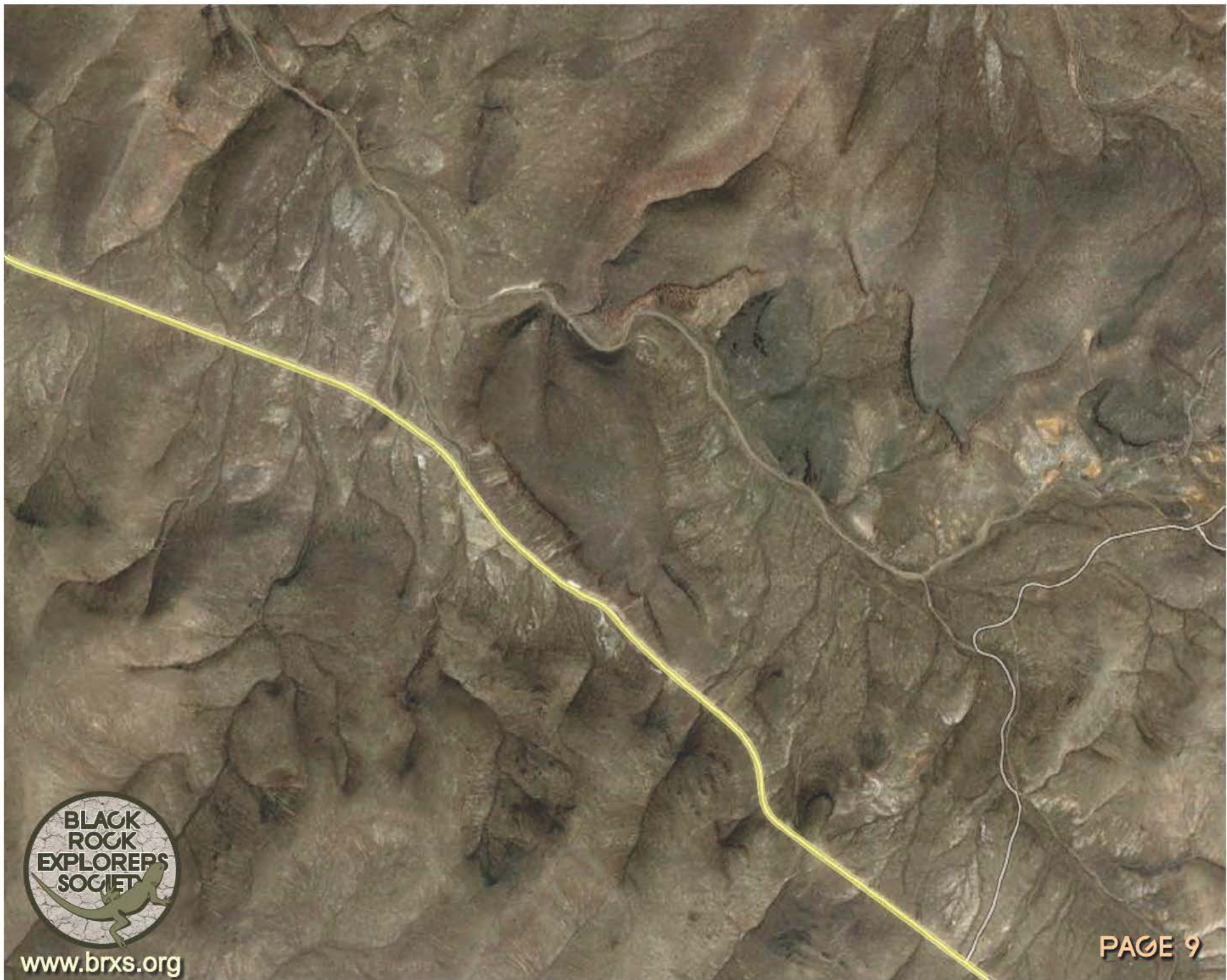
Once you turn right on Seven Troughs Rd there is no more paved road.

Trinity Pass


8 • 11.7 miles

40° 17' 29.67" N
118° 38' 32.27" W





www.brxs.org



12 • 16.8 miles
40° 20' 46.54" N
118° 41' 58.92" W

11 • 15.5 miles
40° 19' 43.75" N
118° 41' 38.01" W



13 • 17.5 miles
40° 21' 14.70" N
118° 42' 19.57" W

12 • 16.8 miles
40° 20' 46.54" N
118° 41' 58.92" W





15 • 21.3 miles

40° 24' 19.02" N
118° 44' 03.48" W

Poker Brown
Canyon

14 • 20.5 miles

40° 23' 33.24" N
118° 43' 40.65" W



16 • 22 miles
40° 24' 59.99" N
118° 44' 25.88" W



To MAZUMA

TUNNEL CAMP

18 • 25 miles
40° 26' 42.06" N
118° 46' 07.39" W

17 • 24.3 miles
40° 26' 29.39" N
118° 45' 54.65" W

To VERNON



www.brxs.org

Tunnel Camp remains a busy ghost town. It has an abundance of old structure and mines.

The seven ridges, lower right, are the troughs made by Frank Ward in 1894 to water his sheep. The area was named after these Seven Troughs.

From Tunnel Camp it is a short jaunt to either Mazuma to the North or Vernon to the South.

To MAZUMA

To VERNON



www.brxs.org

PAGE 16

To TUNNEL CAMP

VERNON

To KUMIVA VALLEY

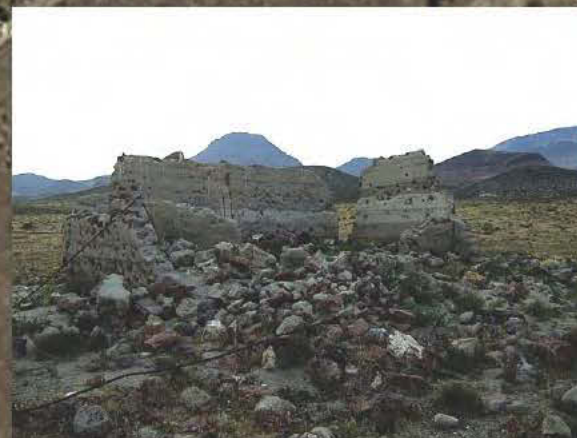
**2.2 miles from Tunnel Camp
15 miles from the Kumiva Valley
40° 25' 23.97" N
118° 47' 14.08" W**



www.brxs.org

About all that remains identifiable is the Vernon Jail
which was blown up by bad people.

VERNON



www.brxs.org

MAZUMA

Seven Troughs
Canyon

To FARRELL

1 mile from Tunnel Camp

40° 27' 16.12" N
118° 45' 48.95" W

To TUNNEL CAMP



www.brxs.org



1.2 miles from Tunnel Camp
40° 27' 28.70" N
118° 45' 55.04" W

MAZUMA



1 mile from Tunnel Camp
40° 27' 16.12" N
118° 45' 48.95" W



www.brxs.org

Wildcat
Canyon

American
Flat Canyon

FARRELL

6.6 miles from Tunnel Camp

40° 31' 27.29" N

118° 43' 45.38" W

TUNNEL CAMP



www.brxs.org

WILDCAT & AMERICAN FLAT CANYONS

Farrell was platted out in 1906 after discoveries of gold in the area. The townsite literally sprang up in one week's time. By the summer of 1907, Farrell had numerous tents, a couple restaurants, two rooming houses, two stables, several saloons, a lumberyard, and a post office.

The townsite was short lived as no permanent veins were ever found. By 1909, the townsite was pretty much abandoned, although the post office did not close until 1911.

It is also the starting point for very interesting things in Wildcat and American Flat Canyons.



www.brxs.org

TUNNEL CAMP